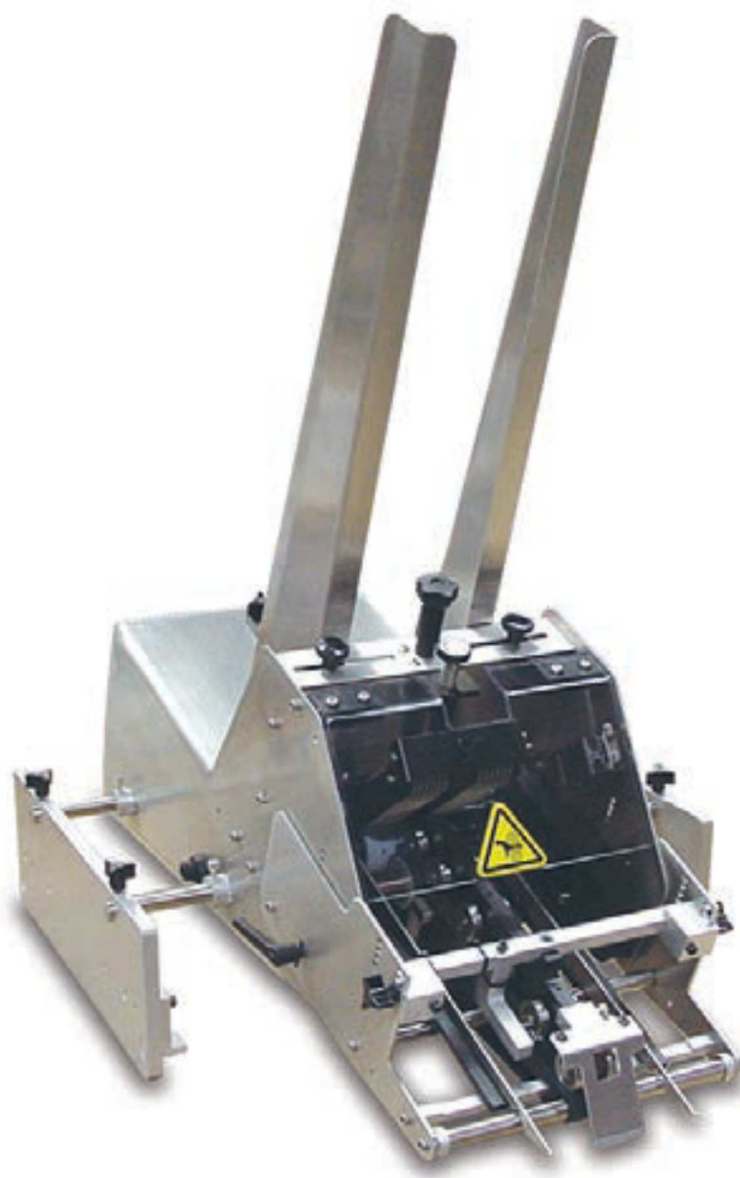




## *Converge C-900 and C-1200*



Siehe auch:  
[http://streamfeeder.com/Saleslit/c900\\_c1200.pdf](http://streamfeeder.com/Saleslit/c900_c1200.pdf)



## Converge C-900 and C-1200

Serie: <i>Streamfeeder</i> – Modell <b>C-900</b>	Serie: <i>Streamfeeder</i> – Modell <b>C-1200</b>
Größe des Beilagenmaterials:	Größe des Beilagenmaterials:
Min.: <b>51</b> mm x <b>64</b> mm	Min.: <b>51</b> mm x <b>64</b> mm
Max.: <b>178</b> mm x <b>153</b> mm	Max.: <b>254</b> mm x <b>254</b> mm
Dicke des Beilagenmaterials:	Dicke des Beilagenmaterials:
Min.: 0,760 mm	Min.: 0,760 mm
Max.: 6,350 mm	Max.: 6,350 mm
Stapelschacht/Stapelhöhe bis:	Stapelschacht/Stapelhöhe bis:
609 mm	609 mm
Geschwindigkeit:	Geschwindigkeit:
Ca. 102 m/Minute	Ca. 102 m/Minute
Placement Tolerance Steady speed up to	Placement Tolerance Steady speed up to
+/- 1.58 mm	+/- 1.58 mm
Elektrischer Anschluss :	Elektrischer Anschluss :
230vac, 50/60Hz, 10A	230vac, 50/60Hz, 10A
Gewicht: 27,22 kg	bis 45,8 kg

### **Applications** (*ask us about your application*)

Mailing Systems Flighted Infeeds Conveyors  
Vacuum Transports Folders/Gluers Box Packaging

### **Products** (*ask us about your products*)

Plastic Cards, Collapsed Cartons, Folded Documents,  
Manuals, Coupons, Magnets, Cardstock, Envelopes  
Booklets, Backer Board, Business Cards and more...

### **Overview**

The Converge Series Tip-on Feeders are designed to be a modular, high-speed accurate placing feeder. Precision placement of products onto carrier targets is performed consistently and accurately at high speed. The modular design allows Converge feeders to be easily integrated to existing equipment such as folder/gluers, vacuum bases, conveyors, or configured as part of a turn-key attaching system. Feed a wide variety of flat and multi-thickness products including cards, coupon, and more up to 24,000 pieces per hour (business card).

### **Standard Features**

Long lasting natural gum rubber feed belt with vacuum assist ready

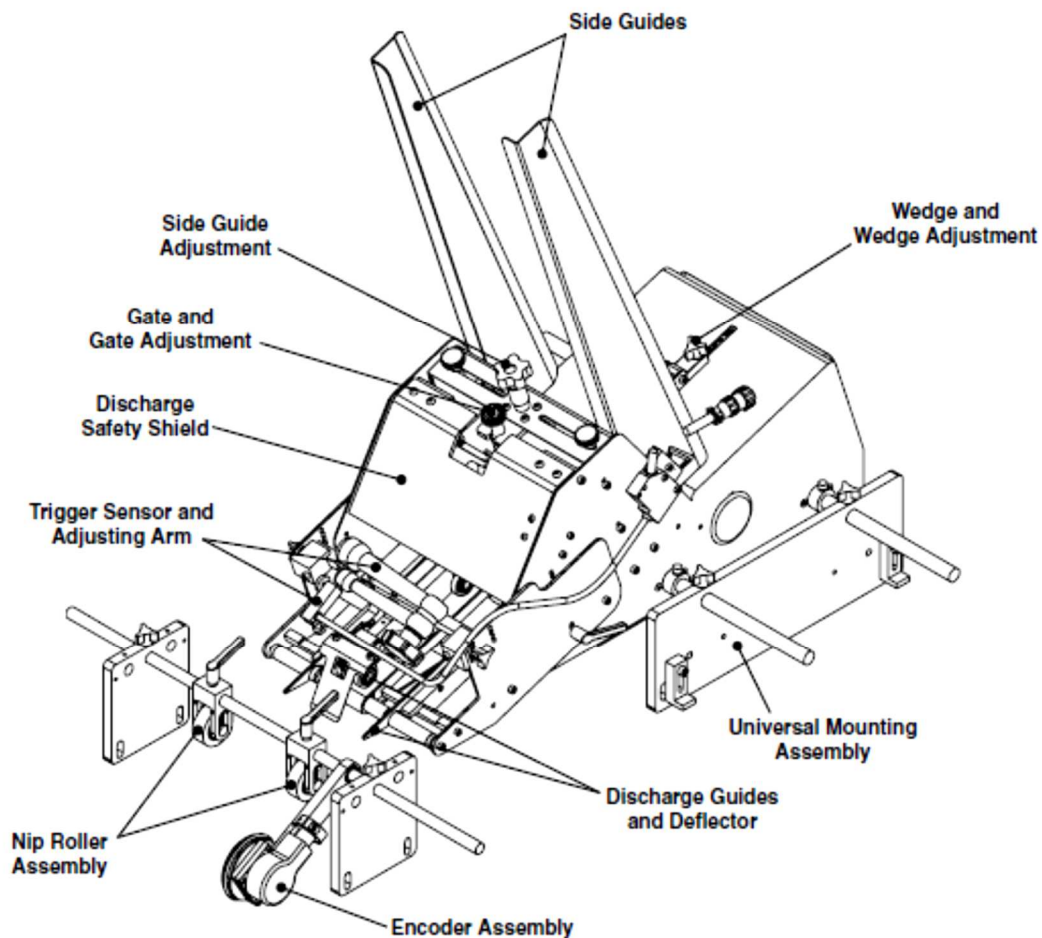
- One-knob side guide adjust
- Adjustable discharge angle
- Servo motor/controller
- Encoder
- Pushbutton operator interface
- Universal mount for most bases
- Stainless steel construction
- High performance product sensor
- System I/O interface
- Variable adjust placement position
- Discharge guides to ensure side-to-side registration
- No-adjust hold-down



# Converge 900



## Product Guide



The Converge 900 is designed for reliability, flexibility, and ease of use. All parts required for setup, loading, feeding, sensing and easy operator control are combined into one compact unit.

Review the *main assemblies* in Figure 1-1 to become familiar with names and locations of feeder parts and adjustments. This will help prepare you for initial setup. Descriptions are found in Table 1-1.

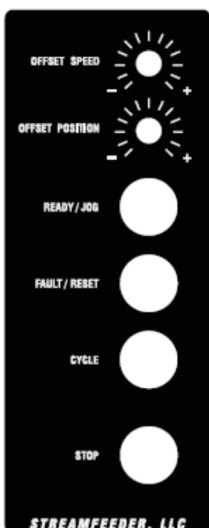
Review the *control panel components* in Figure 1-2 to become familiar with names and locations of specific connectors, switches, and controls. This will help prepare you for installation and operation. Descriptions are found in Table 1-2.





**Table 1-1. Main Assemblies Feature Descriptions**

Feature	Description
<b>Gate assembly and adjustment</b>	Mounted on a gate plate directly above the feed belt, this device provides a curvature to help preshingle stacked product. Adjustment knob allows you to set downward pressure. When properly adjusted, a gap the thickness of one and a half pieces is created to help singulate and eject product.
<b>Side guides and adjustments</b>	Holds a stack of product to be fed and helps keep it straight for proper entry through the gate assembly area. Adjustment knob allows you to move the side guides equally offset for different size products.
<b>Wedge and adjustments</b>	Lifts the product to keep it off the table top, reduces excessive contact with the feed belts, and helps push the product against the curvature of the gate assembly. To achieve proper lift, adjustment wing-nuts allow you to adjust the wedge to various positions and angles.
<b>Hold-down</b>	This series of rollers provides a self-adjusting pressure on top of product to force it down on the discharge belt, helping to eject a single product after it exits the gate assembly area.
<b>Trigger sensor and adjustments</b>	Mounted at a remote location, it "looks" for a target on-line (such as the carrier piece) to start the feeder.
<b>Feed belt</b>	Provides the friction and motion necessary to pull individual product from the bottom of the stack and through the gate assembly area.
<b>Discharge belt</b>	Combined with the hold-down rollers, provides the friction and motion necessary to pull product away from the gate assembly area. Rotates 50% faster than feed belts to separate and eject the bottom product away from next product entering the gate assembly area.
<b>Operator control panel</b>	Remote handheld, containing switches for setup and operation.
<b>Discharge safety shield</b>	Provides residual risk protection to operator when feeder is running.
<b>Nip roller assembly</b>	Adjustable set of wheels to capture product as it is dispensed.
<b>Encoder assembly</b>	Provides RPM data to feeder controls for timing and placement.
<b>Discharge guides and deflector</b>	Provides control of product to minimize skew.
<b>Universal mounting assembly</b>	Consists of shaft and plate mounting for most vacuum bases.



**Table 1-2. Operator Control Panel Feature Descriptions**

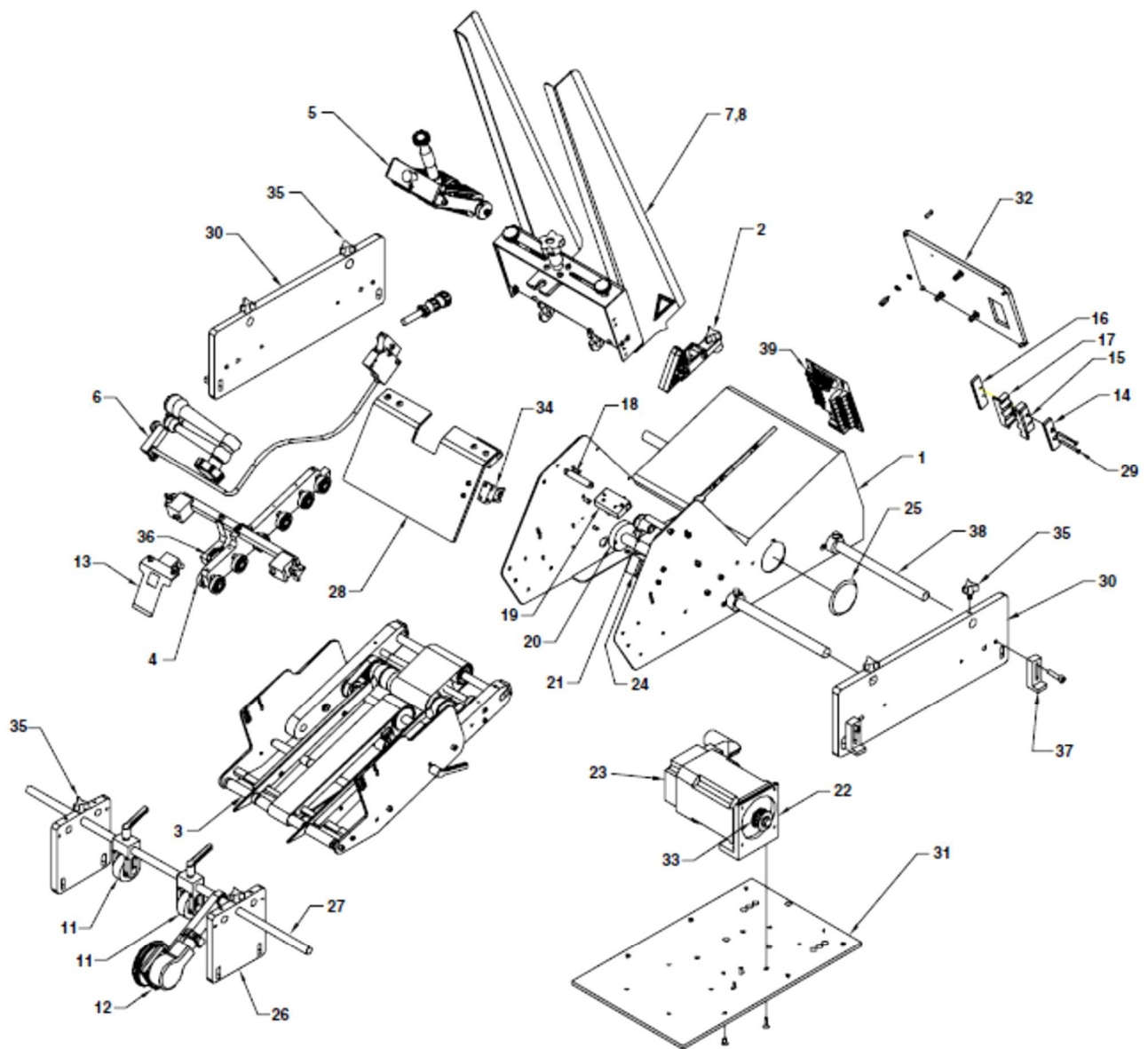
Feature	Description
<b>Offset Speed</b>	Adjustment to increase feeder speed above the transport speed for added placement control.
<b>Offset Position</b>	Increases delay to the trigger signal for added placement control.
<b>Ready / Jog</b>	Illuminated lamp indicates the feeder is ready to dispense product when triggered. Also acts as a jog button for setup.
<b>Fault / Reset</b>	Illuminated lamp to indicate a fault. Pressing it resets the fault and brings feeder to ready mode.
<b>Cycle</b>	Provides a manual cycle of the feeder. Typically used during setup.
<b>Stop</b>	Immediately stops the feeder and puts the feeder into fault mode.





# Converge 900

## 8 Mechanical Components



Converge 900  
Exploded View  
Assembly: 14600001



**Converge 900**  
**Mechanical Components Assembly: 14600001**

Diagram Number	Qty.	Description	Part Number
1	1	Shell	51460052
2	1	Extended Narrow Wedge Assembly	63311212
3	1	Carriage C900 Assembly	14601101
4	1	Hold Down Assembly, C900	14601108
5	1	Advance O-ring Gate Horizontal Adjust HDO	87211007
6	1	Flight Sensor Assembly	14601110
	1	SHCS, 8-32 x 3/8	00002813
	2	SHCS, 10-32 x 1/2	00002815
7	1	Solid Gate Plate Assembly	70011004
	4	SHCSS/S 10-32 x 3/8	00002810
8	1	Side Guide Assembly Kit 1424	64011017
9	1	Control Panel Assembly (Not Shown)	14601109
10	1	Operator Interface Assembly (Not Shown)	14601113
11	2	Knock Down Assembly	14601112
12	1	Encoder Assembly	14601111
13	1	Deflector Assembly	14601118
14	1	Side Cable Block	44947085
15	1	Side Cable Mount, LH	44947084
16	1	Side Adjust Block	44947086
17	1	Side Cable Mount, RH	44947107
18	2	Guard Cover Mount Shaft	44640011
	2	SHCS, 10-32 x 3/8	00002310
19	2	Hinge Top Cover Mount Block	44640012
20	4	Alignment Block	51460053
	4	Knob, 6-32	435SO269
	8	FHCS, 8-32 x 3/8	00003335
21	1	Bulkhead Union, Legris	51476005
	7.5 in	Vacuum Hose	44450096
22	1	Motor Mount	44630011
	4	SHCS, 10-32 x 5/8	00002320
	4	Lock Washer	00002608
23	1	Servo Motor	44946005
	3	FHCSSS/S 10-32 x 1/2	00002830
24	1	Safety Interlock	70011007
	2	SHCS, 6-32 x 1 1/8	00002801
	2	6-32 Nyloc Nut	00002101
25	1	Plug	44500061
26	2	Knock Down Mount	51460082
	4	Shoulder Bolt, 3/16 x 1/8	00003321
27	1	Knock Down Shaft	51460083
28	1	Top Protective Cover	51460080
	4	BHCS 10-32 x 3/8	00002805
	1	Warning Label	44600004
29	2	FHMSPH 6-32 x 1 1/2	00002232
30	2	Feeder Mount	51460081
	2	BHCS, 3/8-16 x 1/2	00003363
31	1	Base Plate	51460070
	6	FHCS, 10-32 x 1/2	00002830
32	1	C900 Cover Plate	51460049
	4	Hex Standoff	53500279
	8	#6 Flat Washer	00002604
	4	SHCS 6-32 x 1/2	00002212
33	1	Pulley 16T (16 x L37 Dia-500K DFA)	43560097
	2	Set Screw, 10-32 x 1/8	00003352
34	1	Safety Interlock Key	44649010
	2	BHCS, 8-32 x 1/2	00002302
	2	No. 8 Lockwasher	00003301
	2	Kepnut, 8-32	00002121
35	6	Knob	23500092
36	1	Sheet Sensor Harness	14601119
	2	Shoulder Bolt, 2/56 x 5/8	00002505
37	4	Mounting Bracket	51460087
	4	SHCS, 1/4-20 x 1	00002390
	4	Flat Washer	00002605
38	2	Mounting Shaft, 5/8 Dia	51460084
39	1	Board ST, I/O Distribution	44700021
	4	PHSC 6-32 x 3/8	00002450
N/S	5	Mount, Cable Tie	00003402
N/S	8	Cable Tie	53500030
N/S	6	Cable Tie	435SO263



# Converge 900

Extended Narrow Wedge Assembly: 63311212

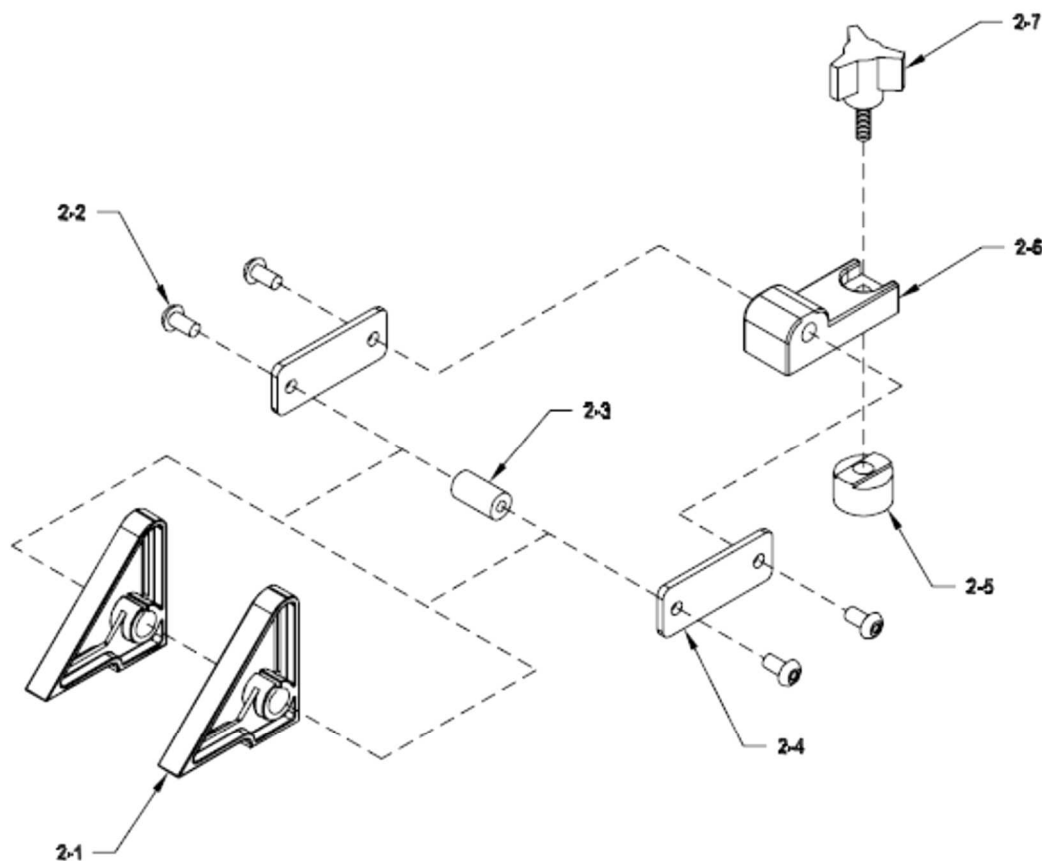


Diagram Number	Qty.	Description	Part Number
2-1	2	Wedge Material Support	33560212
2-2	4	BHCS, 10-32 x 3/8	00002305
2-3	1	Shaft, Belt Tensioner 3/8	43555077
2-4	2	Bracket Extension Narrow Wedge	44633022
2-5	1	T-Nut Round	44633016
2-6	1	Block, Hold Down Wedge	44633021
2-7	1	Knob, 3 Lobe 10-32 x 5/8	44633033





**Carriage Assembly: 14601101**

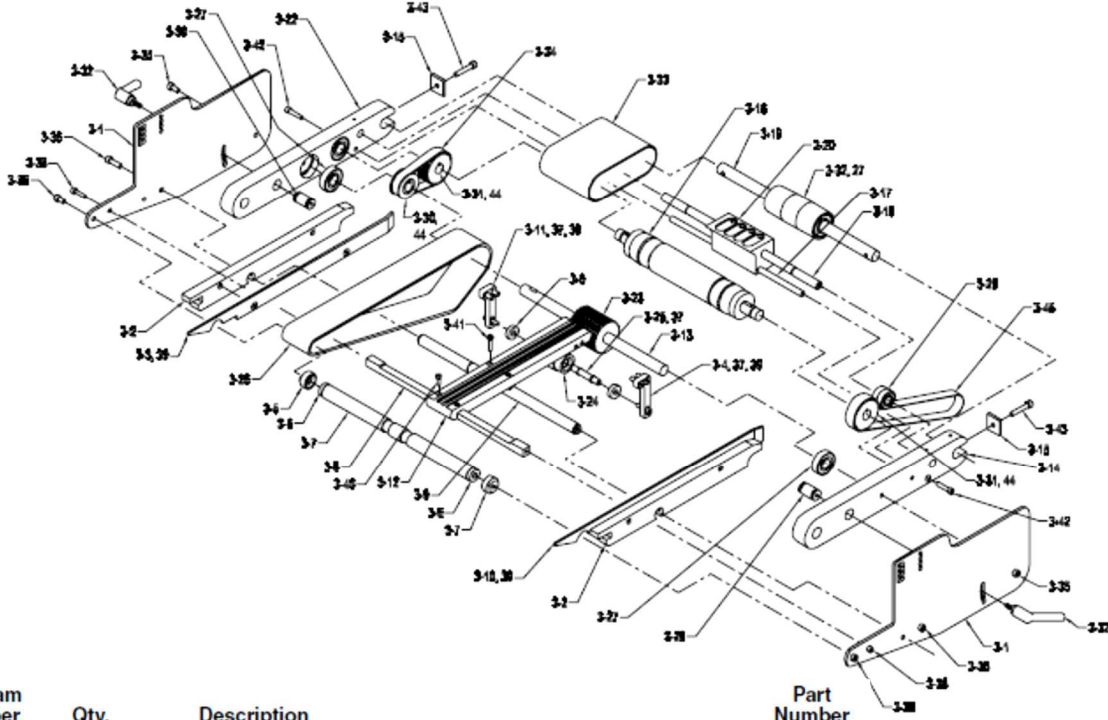


Diagram Number	Qty.	Description	Part Number
3-1	2	Side Plate	51330002
3-2	2	Material Support Guide Rail	51460050
3-3	1	Alignment Rail, RH	51460059
3-4	1	Belt, Tension Block, Left	51460013
3-5	2	Cup, Bearing R4	44846050
3-6	4	Bearing R4	44582021
3-7	1	Vacuum Lower Discharge Shaft	51460010
3-8	1	Support Bar	51460007
3-9	1	Round Support Shaft	51460011
3-10	1	Alignment Rail, LH	51460051
3-11	1	Belt Tension Block, Right	51460012
3-12	1	Hold Down Support Block	51460061
3-13	1	Drive Shaft, 1/2 SS	23560211
3-14	1	Left Side Carriage Holder	51460069
3-15	2	Vacuum Belt Tension Plate	44485004
3-16	1	Drive Shaft	44700016
3-17	1	Shaft Block Support	51460071
3-18	1	Shaft Belt Support Belt	23500040
3-19	1	Idler Shaft	23560147
3-20	1	Manifold	44947038
3-21	1	Driven Tube	44947041
3-22	1	Right Side Carriage Holder	51460068
3-23	1	Pulley, 25T	51460002
3-24	1	Roller, Pulley	51460015
3-25	1	Tensioner Shaft	51460014
3-26	1	Discharge Belt, 240 x L150 X	51460072
3-27	6	Bearing, R8-2RS	23500094
3-28	2	Bearing, R6-2RS	23500095
3-29	2	Belt, Tension Shaft	44852098
3-30	1	Pulley, 16T (16 x L37 Dia. 500K DFA)	43560097
3-31	2	Pulley, 24T (24 x L37 Dia. 500KA)	43560098
3-32	2	Handle, Ratchet 10-32 x 1/2	43555097
3-33	1	Belt, Feed Blue Gum Vac Liner, 2.75W x 9.75	44947037
3-34	1	Timing Belt, 78 x L037 Kevlar	23560078
3-35	2	SHCS, 10-32 x 1/2	00002815
3-36	10	SHCS, 10-32 x 3/8	00002810
3-37	2	1/4 Grip ring	00001105
3-38	2	SHCS, 10-32 x 5-16	00002809
3-39	4	FHCS, 10-32 x 1/2	00002330
3-40	2	SHCS, 6-32 x 3/8	00003304
3-41	2	SHCS, 6-32 x 5/8	00003303
3-42	2	SHCS, 8-32 x 1	00002303
3-43	2	SHCS, 10-32 x 1	00002335
3-44	3	Woodruff Key, 1/8 x 3/8	00003351
3-45	1	Timing Belt, 160 x L037 Kevlar	33560097



**Hold Down Assembly: 14601108**

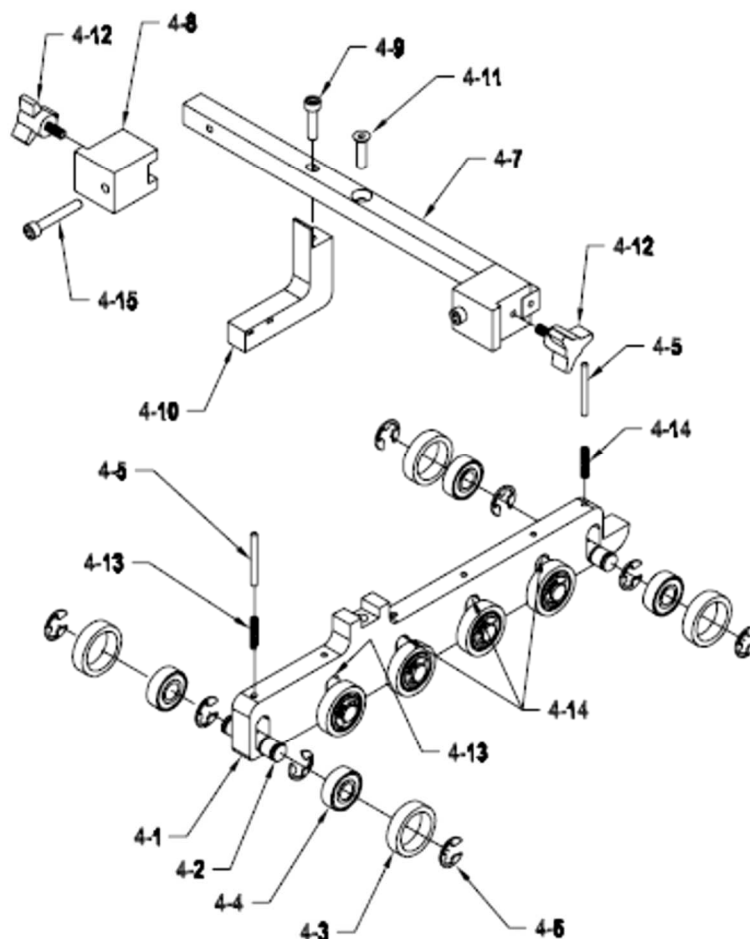


Diagram Number	Qty.	Description	Part Number
4-1	1	Hold Down Block	51330006
4-2	6	Hold Down Shaft	51277052
4-3	12	Discharge Roller Collar	51277087
4-4	12	Bearing, R6-2RS	23500095
4-5	6	Spring Pin, 1/8 in	51312003
4-6	24	E-Clip, 3/8	00001150
4-7	1	Hold Down Cross Support	51460008
4-8	2	Hold Down Support Block	51460086
4-9	1	SHCS, 10-32 x 3/4	00002325
4-10	1	Sensor Mount	51460004
4-11	1	FHCS 10-32 x 3/4	00002338
4-12	2	Knob, Medium	23500092
4-13	2	Spring, Heavy	51460073
4-14	4	Spring, Hold Down	51328001
4-15	2	SHCS, 10-32 x 1 1/4	00002312



**Advancing O-Ring Gate with Horizon Adjust, HDO: 87211007**

**Converge 900**

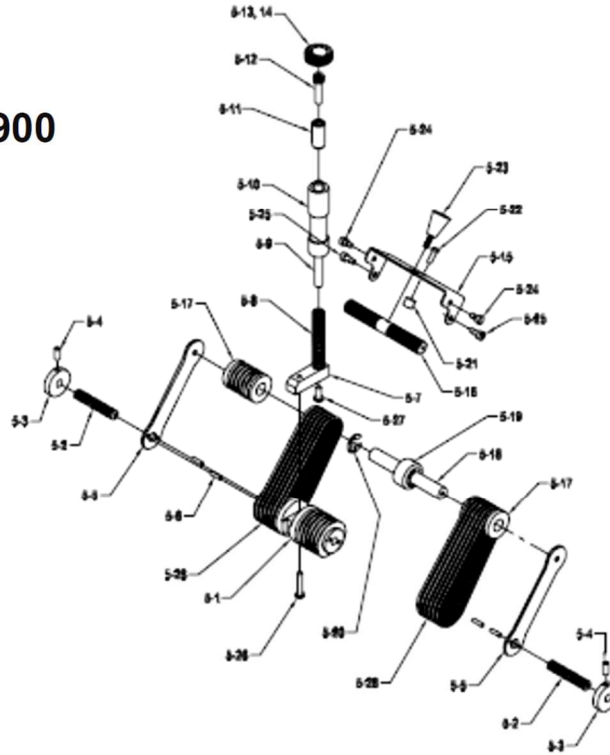


Diagram Number	Qty.	Description	Part Number
5-1	1	Cylinder, Gate Advance	44872004
5-2	2	Adjust Screw	44872005
5-3	2	Roller	44872003
5-4	2	SS 10-32 x 3/8	44872007
5-5	2	Adjuster Side Plate	44872002
5-6	4	Spring, Roller Pin	00001161
5-7	1	Gate, Lift Shaft Mount	15000001
5-8	1	Gate, Compression Spring	23500083
5-9	1	Gate, Lift Shaft	23560084
5-10	1	Cylinder, Gate Spring Tension	23500019
5-11*	1	Adjust Knob Sleeve	23500037
5-12*	1	SHCS, 1/4-28 x 1	00002400
5-13*	1	Knob w/o Screw	23500077
5-14*	1	Gate, Adjust Knob Label	23500084
5-15	1	Belt, Indexer Bracket	44657005
5-16	1	Pin, Roll Cam	44657003
5-17	2	O-Ring, Take up Roller	44657002
5-18	1	Belt, Indexer Shaft	44657008
5-19	1	Belt, Indexer Center Hub	44657009
5-20	2	E-Clip 1/2	00001155
5-21	1	Belt, Indexer Spacer	44657010
5-22	1	BHCS, 8-32 x 1/2	00002302
5-23	1	Knob Handle, 10-32	44657007
5-24	2	Shoulder Screw, 3/16 x 1/8 8-32 x 3/16	00003321
5-25	2	Shoulder Screw, 3/16 x 1/4 8-32 x 3/16	00003320
5-26	1	BHCS, 10-32 x 1	00002340
5-27	1	BHCS, 10-32 x 1/2	00002334
5-28	12	O-Ring, Advance Gate, HDO	44657011

\*5-11 thru 5-14 can be ordered as assembly #23511037





## Converge 900

**Flight Sensor Assembly: 14601110**

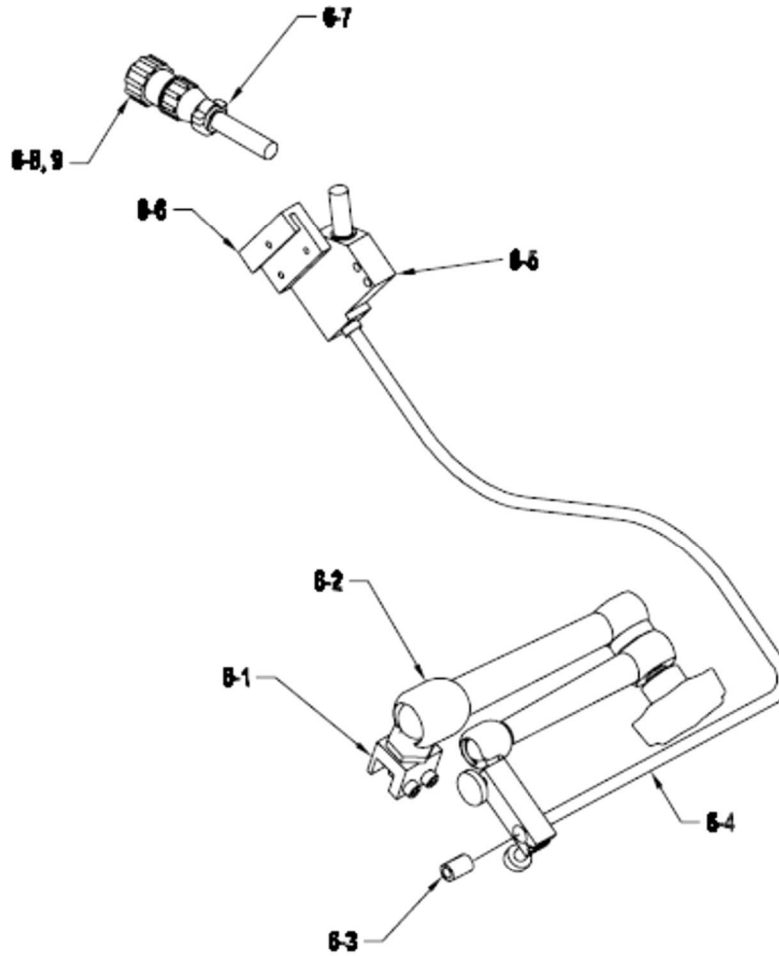


Diagram Number	Qty.	Description	Part Number
6-1	1	Sensor Mounting Block	51460065
	2	SHCS, 10-32 x 1/2	00002815
6-2	1	Scanner Arm	51208166
6-3	1	Fiber Optic Bushing	51460063
6-4	1	Fiber Optic Sensor w/Cable	51460074
6-5	1	Fiber Optic Amplifier	51460075
	2	BHCS, 8-32 x 3/4	00003322
6-6	1	Fiber Optic Sensor Mount	51460064
	1	SHCS, 8-32 x 3/8	00002813
6-7	1	Clamp, Cable Circular 4 Pin AMP	53500506
6-8	1	Plug, 4 Pin 206429-1 AMP	53500504
6-9	3	Pin, Contact Male, 24-20 AWG AMP	53500502



## Converge 900

### Solid Gate Plate: 70011004

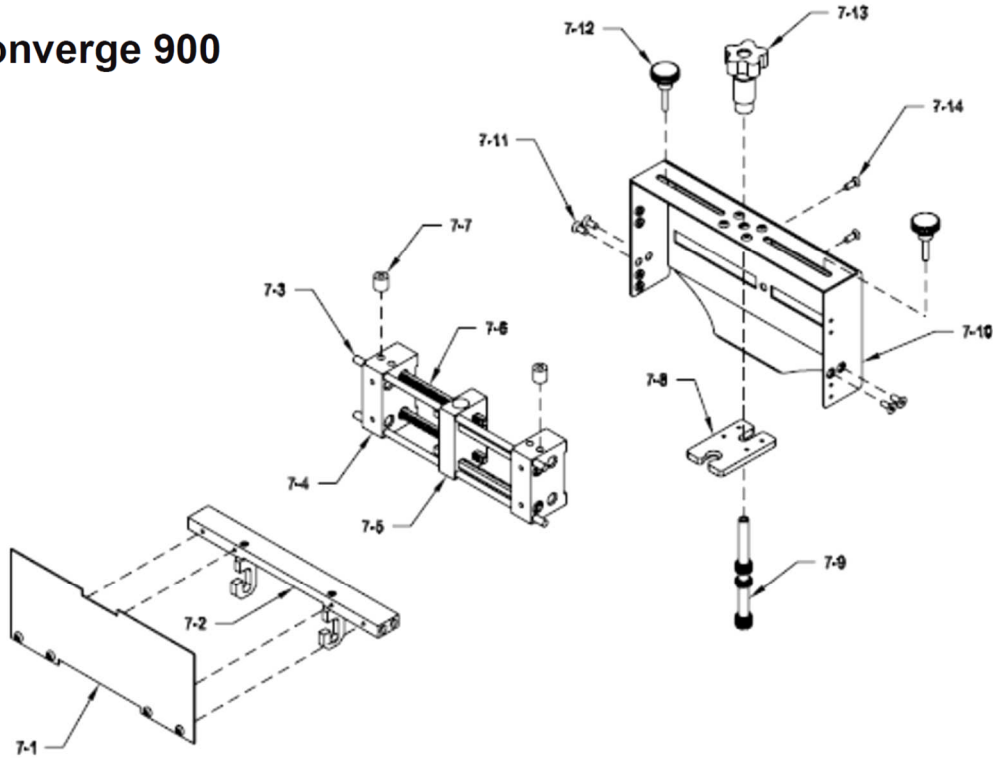


Diagram Number	Qty.	Description	Part Number
7-1	1	Cover, Side Guide Adjustment	44700014
	4	BHCS, 10-32 x 3/8	00002805
7-2	1	Bar, Lower Gate Support	44700011
	2	Hook, Gate J	15000007
	2	SHCS, 8-32 x 5/8	00002215
7-3	2	Rail, Side Guide Support	44700012
7-4	2	Side Guide Adjustment Block	44646001
	4	Screw, Socket Set, 1/4-20 x 1/4	00002205
7-5	1	Guide, Stationary Block Side	44646002
7-6	4	Rack	44700013
7-7	2	Lower Spacer	44646015
7-8	1	Block, Adjustment Reference	44646004
	4	BHCS, 10-32 x 3/8	00002805
7-9	1	Shaft, Pinion Adjustment	44646005
7-10	1	Solid Gate Plate	44700005
7-11	4	Flat Head Screw, 10-32 x 3/8	00002234
7-12	2	Knob, Plastic, 10-32	44681021
	2	Socket Set Screw, 10-32 x 1 1/2	00003313
	2	Upper Spacer	44646016
7-13	1	Knob, 5 Lobe	44646009
	1	Upper Retainer Spring	44646008
	1	Lower Retainer Spring	44646007
	1	Compression Spring	44646013
7-14	2	Flat Head Screw, 10-32 x 1/2	00002830



## Converge 900

### Side Guide Kit: 64011017

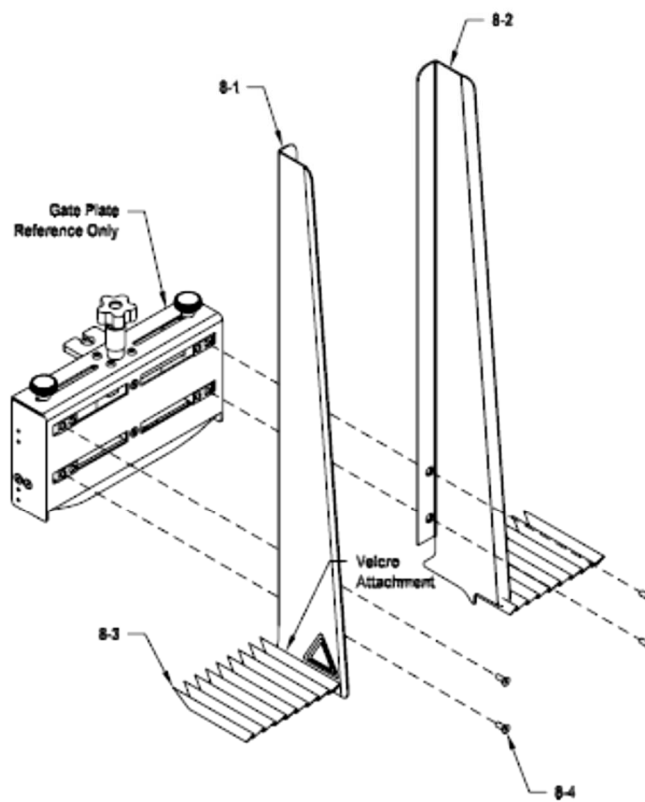


Diagram Number	Qty.	Description	Part Number
8-1	1	Side Guide, Left 1424	44640017
	1	Label, Warning Belt Pinch Point	44600005
8-2	1	Side Guide, Right 1424	44640018
	1	Label, Warning Belt Pinch Point	44600005
8-3	2	Guard, Rear Accordion	44600001
8-4	4	Screw, Flat Head 10-32 x 1/2" LG	00002830





# Converge 900

Control Panel Assembly: 14601109

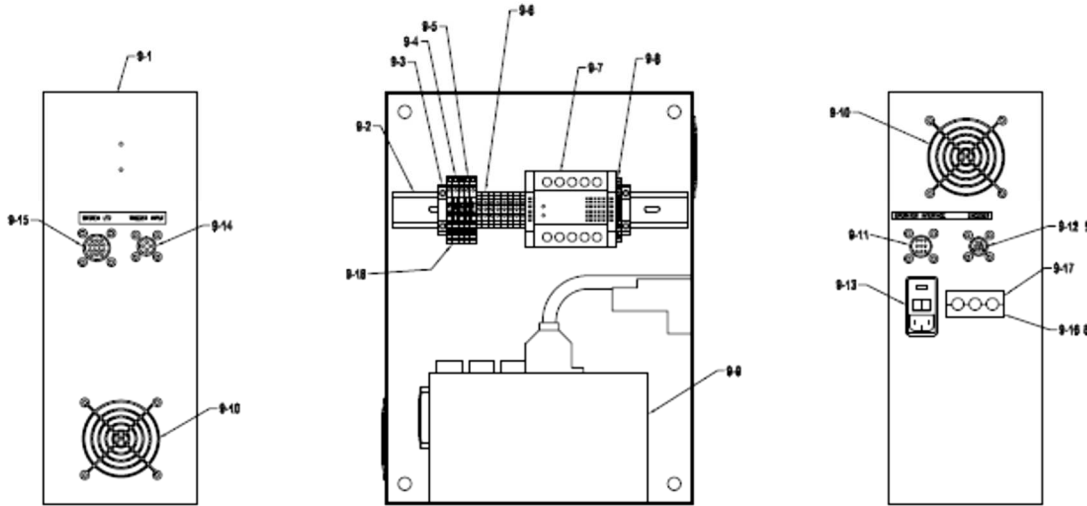


Diagram Number	Qty.	Description	Part Number
9-1	1	Control Box	51460048
9-2	12 in	Din Rail	53500154
	2	BHCS, 8-32 x 3/8	00002306
9-3	2	Plate, Anchor End	53500156
9-4	1	Relay, PLC Form C	51241005
9-5	4	Relay, PLC Solid State	51241006
9-6	8	Terminal Block	53500153
	1	Bridge Bar	53500157
	2	Barrier Plate	53500155
9-7	1	ServoStar SC Drive 6A	51327021
9-8	1	Terminal Block, WAGO Green/Yellow	51327028
	1	Terminal Block, WAGO Side Plate	51327009
9-9	1	Power Supply, Switching 24VDC 50 Watt	53500598
9-10	2	Fan Guard	53500281
	8	BHCS, 8-32 x 3/8	00002306
9-11	1	Harness, Remote Operator Station	14601102
	4	BHCS 8-32 x 3/8	00002306
9-12	1	Harness Encoder	14601105
	4	BHCS 6-32 x 3/8	00003314
9-13	1	Module, AC Power Entry w/o Fuse	44649034
	2	Fuse, 10A 125V Fast GMA 5x20mm	53500455
	2	Terminal, Female	44649046
9-14	1	Flight Trigger Harness	14131106
	4	BHCS, 6-32 x 3/8	00003314
9-15	1	System I/O Harness	14131108
	4	BHCS, 8-32 x 3/8	00002306
9-16	1	Mount, Side Cable, RH	44947107
	1	Side Adjust Block	44947086
	2	FHMSPHS/S 6-32 x 1 3/4	00002236
9-17	1	Mount, Side Cable, LH	44947084
	1	Block, Side Cable	44947085
9-18	1	Bridge, Snap in	51241013
N/S	1	Harness, DC Power	14131111
N/S	1	Harness, AC Power	14601104
N/S	1	Harness, DC Power	14601107
N/S	1	Harness, Power Ground	14601115
N/S	2	Harness, Secondary Ground	14601116
N/S	1	Feeder Interconnect Cable	14601117
N/S	1	Servo Set Kollmergen Cable	44946006
N/S	1	Power Cord, 115 VAC IEC	53500002
N/S	1	I/O Cable	64911012





Pro Series - Feeder/Dispenser  
**Model SI-1750**

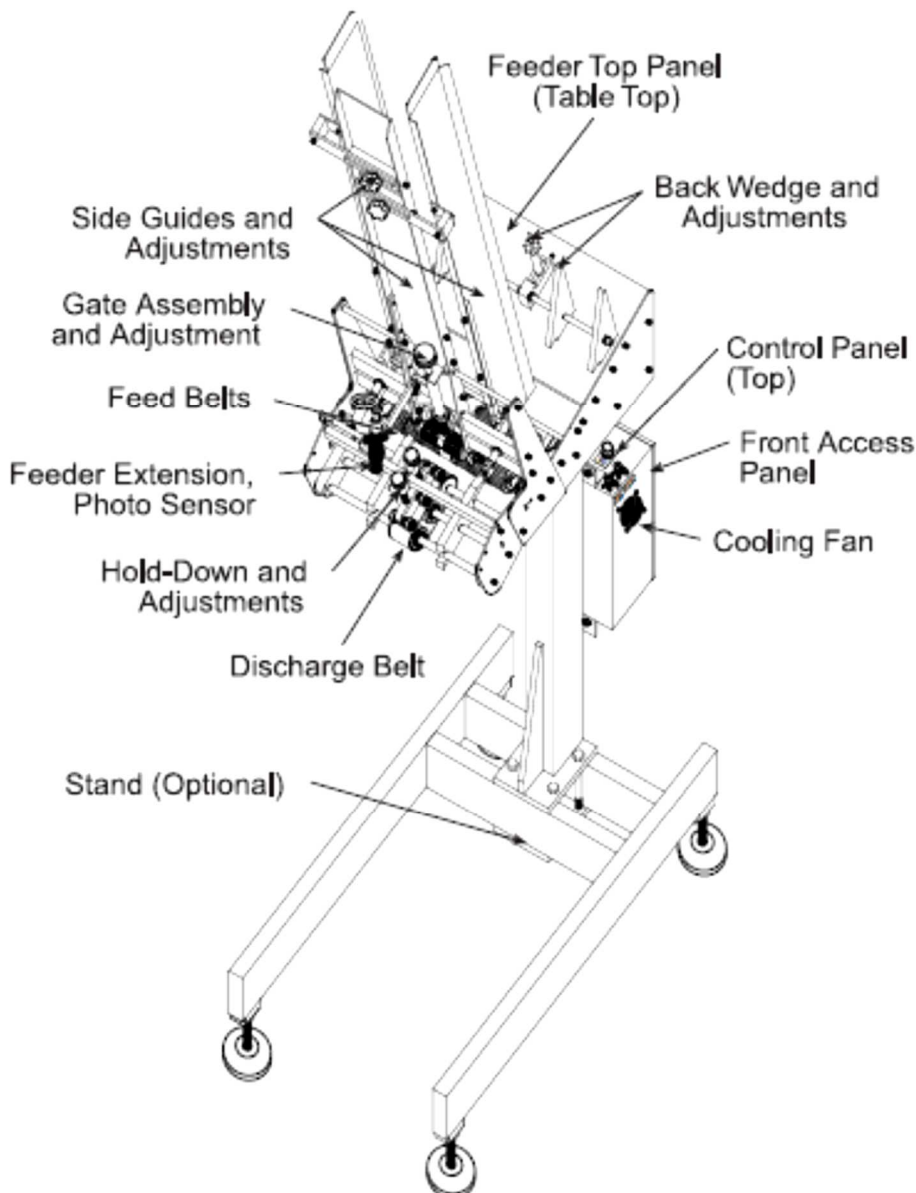
## Main Features

The machine is entirely powered by a single high-torque stepper motor that runs off of either a 120- or 240-VAC electrical power source. Once the machine is prepared for operation, the power-up and operation of the feeder is relatively easy.



*Your feeder may look slightly different than the model shown in the following diagrams.*

But to get the most out of your machine, you should first become familiar with all of the features, including controls and sensors, connectors, and cables. Your feeder may look slightly different than the model shown in the following diagrams.



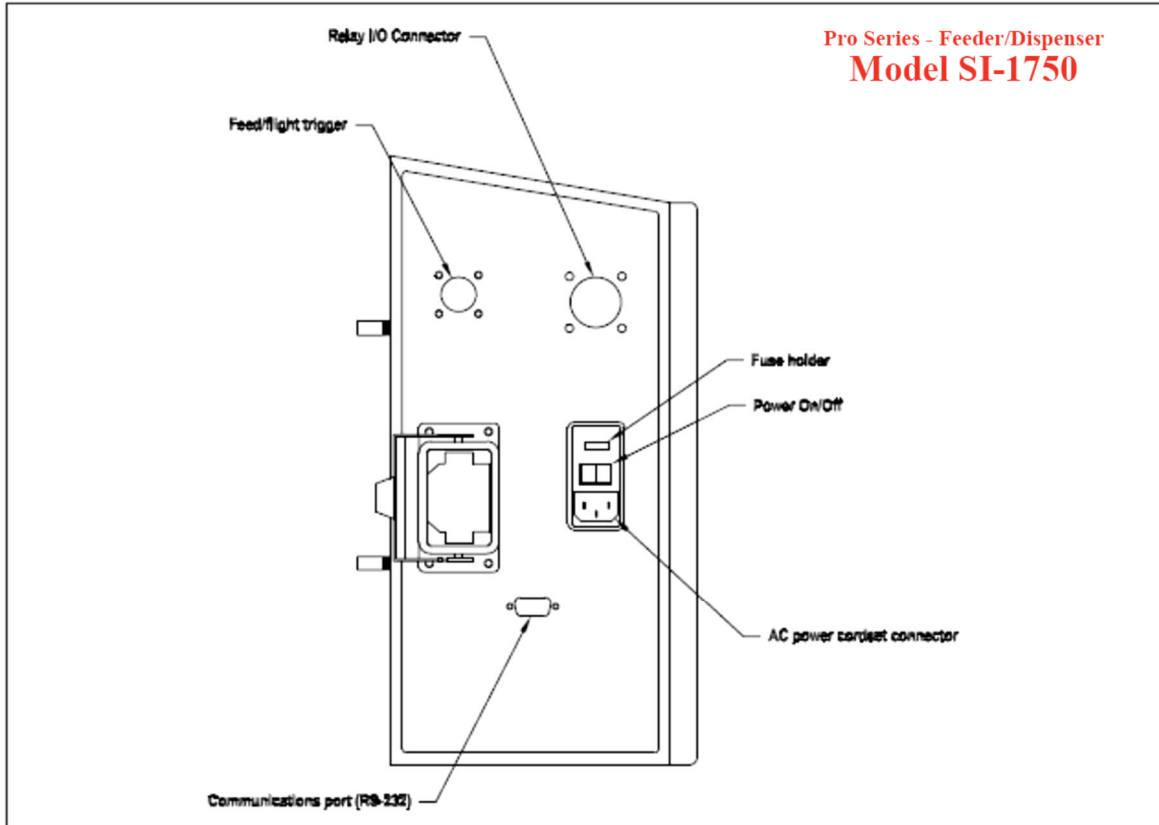




**Pro Series - Feeder/Dispenser  
Model SI-1750**

**Feature Descriptions of SI-1750**

<b>FEEDER</b>	<b>Contains the all hardware, drive motor, and belts for singulating and feeding product from a stack.</b>
<b>Gate assembly and adjustment</b>	<i>Mounted on a gate plate directly above the feed belts, this device provides a curvature to help preshingle stacked product. When properly adjusted, a one-thickness gap is created to help singulate and eject product. Three types of gate assemblies are available, standard O-ring gate, bar gate (optional), and advancing O-ring gate (optional).</i>
<b>Top panel (table top)</b>	<i>Used to support the back wedge. Also provides access to interior of feeder.</i>
<b>Side guides and adjustments</b>	<i>Holds a stack of product to be fed and helps keep it straight for proper entry through the gate assembly area.</i>
<b>Back wedge and adjustments</b>	<i>Lifts the product to keep it off the table top, reduces excessive contact with the feed belts, and helps push the product against the curvature of the gate assembly. Four (4) types of wedge assemblies are available, double S, low-profile, and articulating roller (optional), triangle wedge (optional).</i>
<b>Hold-down and adjustments</b>	<i>This series of rollers provides a varying pressure on top of product to force it down on the discharge belt, thus helping to eject a single product after it exits the gate assembly area.</i>
<b>Extension, photo sensor</b>	<i>Also called a sheet sensor, it "looks" for the leading edge of the product to stop the feeder momentarily. For effective operation, a movable extension allows you to adjust for distance and perpendicular to product.</i>
<b>Feed belts</b>	<i>Provides the friction and motion necessary to pull individual product from the bottom of the stack and through the gate assembly area.</i>
<b>Discharge belts</b>	<i>Combined with the hold-down rollers, provides the friction and motion necessary to pull product away from the gate assembly area. Rotates 50% faster than feed belts to separate and eject the bottom product away from next product entering the gate assembly area.</i>
<b>CONTROLLER</b>	<b>Contains the electronics and controls for operating the feeder. Also, it provides AC power and sensor communications to the feeder via an interconnect cable.</b>
<b>Control panel (top)</b>	<i>Contains all controls, flight sensor connector, and interface/power connectors.</i>
<b>Front access panel</b>	<i>Allows access to controller box interior.</i>
<b>Cooling fan</b>	<i>Draws external air into the interior of box to cool components.</i>
<b>Stand (optional)</b>	<i>Supports the feeder and controller.</i>



### IQuipped Box Features

#### IQuipped Box Feature Descriptions

Feature	Description
AC power cordset connector	Cordset plugs into this IEC320 connector to provide feeder with power from 115-VAC or 230-VAC outlet.
Power On/Off	Toggles AC power On or Off.
Fuse holder	Contains 2 replaceable GMD3, 3.15-Amp, 5-mm fuses. <i>IMPORTANT: Always make sure power module is replaced exactly as removed. Failure to follow this caution can result in damaged electrical parts.</i>
Relay I/O connector	This 14-pin connector is used to output to other devices, either AC or DC voltages, and/or receive input control signals.
Communications port (RS-232)	This 9-pin connector is used to either receive control/data signals from a computer, or send control/data signals to a computer.
Feed/flight trigger	The remote flight-detect sensor plugs into this 4-pin connector to provide the "start" signal to begin a feed cycle.

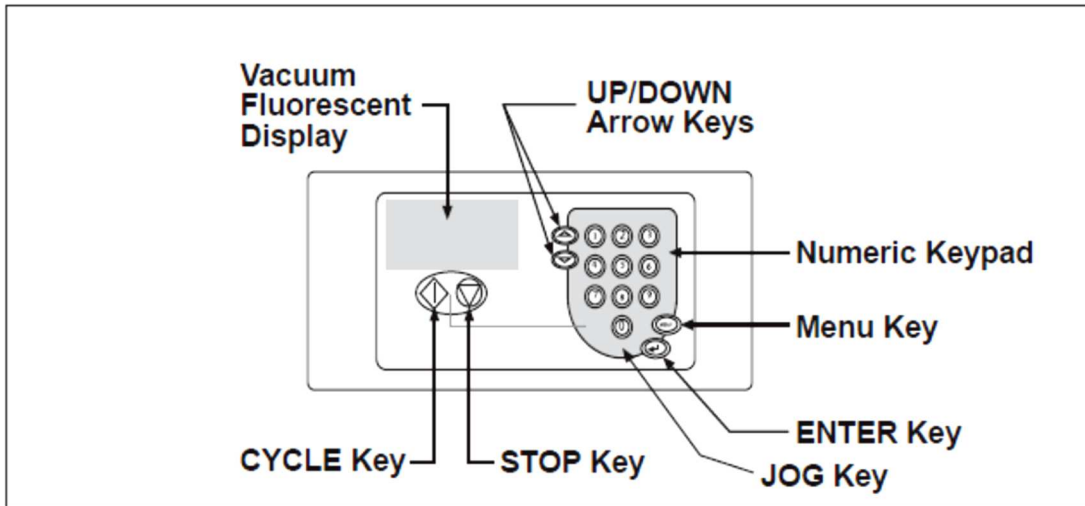


**Pro Series - Feeder/Dispenser  
Model SI-1750**

## Control Interface

The control interface consists of a keypad and display arrangement which allows you to not only control the operation of the feeder, but it also allows you to monitor the status of the job being run.

### Control Interface Features



### Control Interface Feature Descriptions

Feature	Description
Vacuum fluorescent display	This 4-line x 20-character display provides menus for the operator control interface and provides status of feeder during cycling.
Numeric keypad	Used to enter data which controls feeder activity, such as speed or batch count.
UP/DOWN arrow keys	Scrolls through the system configuration menus. Also, is used to increase and decrease the speed or batch count.
MENU key	Toggles display between the Run Display screen and the configuration menus.
ENTER key	Allows run values to be stored from the system configuration menus. Also, it resets the piece count or batch count.
CYCLE key	First, used to advance feeder from the "Suspended" mode to the "Ready" mode. Second, clears feeder faults, such as doubles and missed feeds (if applicable). Finally, completes one feed cycle when in "Ready" mode.
STOP key	Stops the feeder and holds it in "Suspended" mode. Also used to cancel a pending batch.
JOG key	Advances the feed belts at a fixed slow speed. This function is useful during feeder setup and may be used to clear jams.

## General

The *control interface* provides you with several different options for monitoring status, entering configuration parameters, and cycling the feeder.

To fully understand how the control interface works, you must first understand the Run Display. The default menu from which you will start all control functions is called the *Run Display*. This screen is the default screen that is shown when you press any key after powering On the machine.





Pro Series - Feeder/Dispenser  
**Model SI-1750**



Turn off feeder and disconnect from main power source before cleaning. Do not attempt to open the access cover. Equipment interior contains incoming 120- or 240-VAC electrical power. Bodily contact with these high voltages can cause electrocution, which can result in serious injury or death.

### Cleaning Controller Box

Visually check the fan ventilation area of the controller box for excessive dust or grime buildup that might inhibit air movement. For more information, consult with a qualified technician.

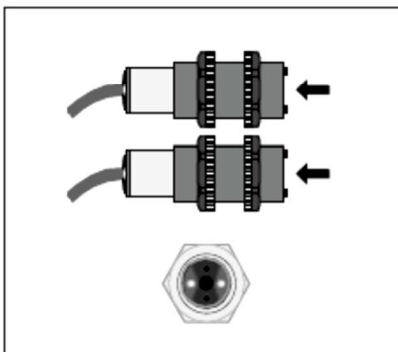


Do not use any solvents or cleaning agents when cleaning the photo sensor lenses. This can result in surface damage and eventual faulty performance.

### Cleaning Photo Sensors

To clean the photo sensor lenses:

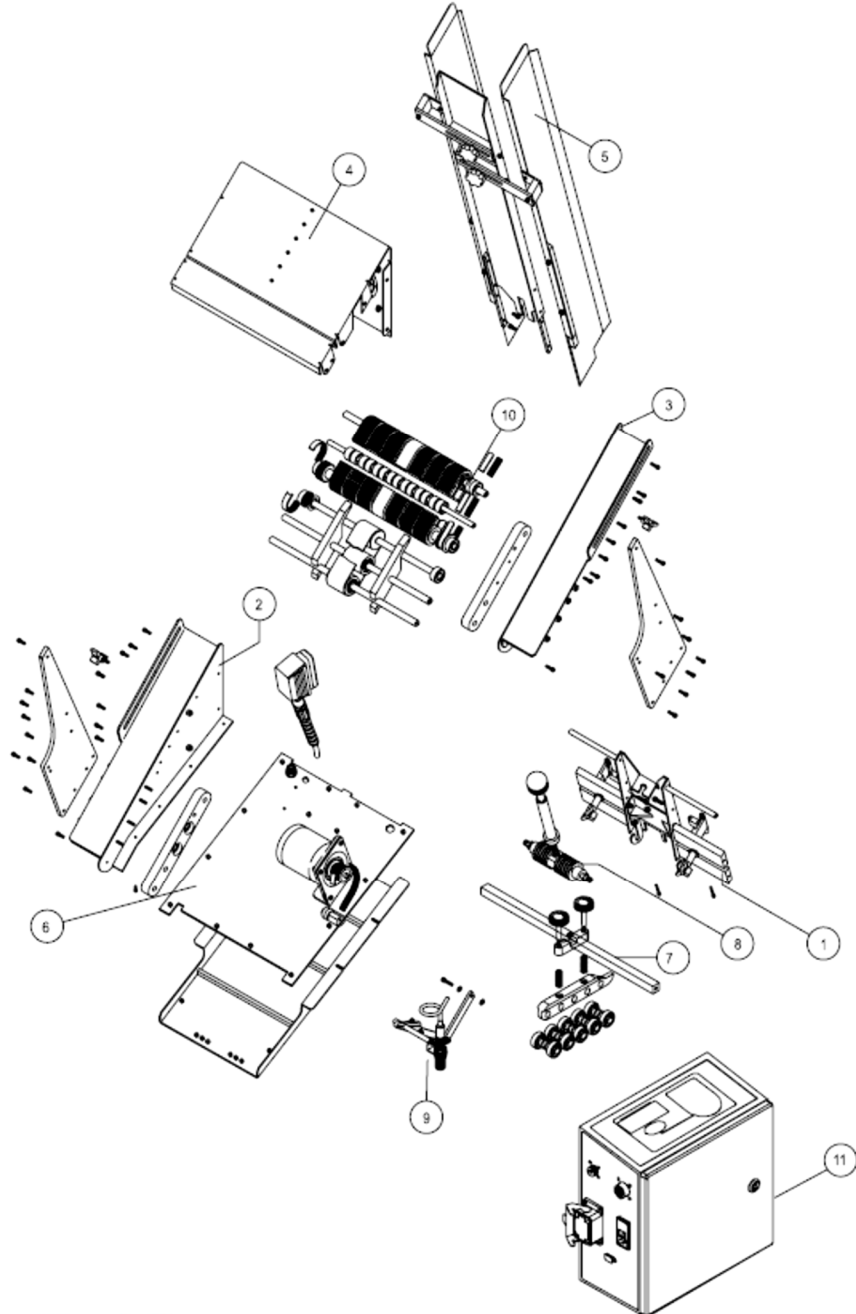
1. Turn Off feeder and remove power cord from outlet.
2. Using a soft, dry cloth, wipe across the face of each lens.
3. Recheck the adjustments of both photo sensors to make sure they are still in alignment to the targets.
4. Restore power.





## Mechanical Components

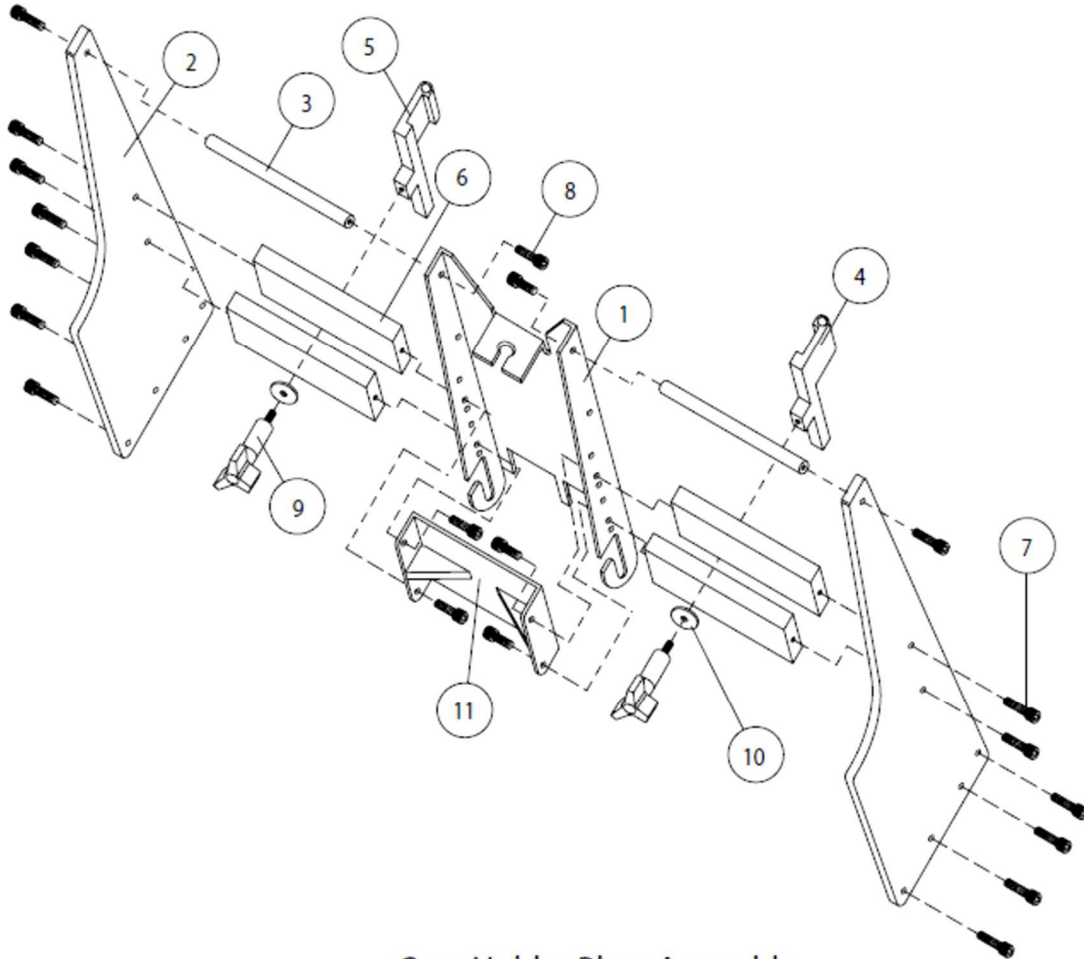
Pro Series - Feeder/Dispenser  
**Model SI-1750**



Item #	Description
1	Gate Holder Plate Assembly
2	Right Side Plate Assembly
3	Left Side Plate Assembly
4	Table Top Assembly
5	Tall Insert Guide Assembly
6	Base Plate Assembly
7	Hold Down Assembly
8	Gate Cylinder Assembly
9	Sheet Sensor Assembly
10	Grooved Gum Carriage Assembly
11	I-Quipped Box



**Pro Series - Feeder/Dispenser  
Model SI-1750**

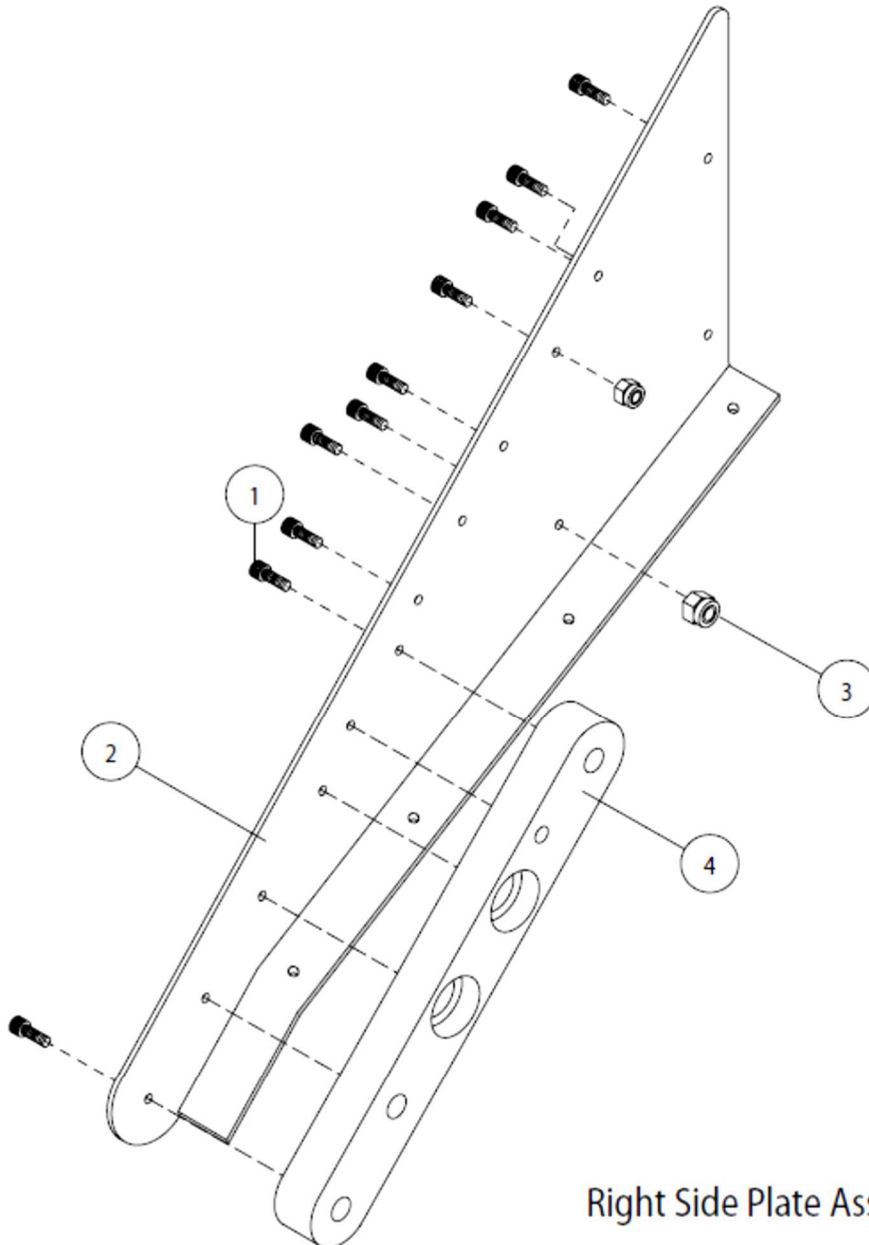


**Gate Holder Plate Assembly**

Item#	Qty.	Part#	Description
1	1	235-00-001	Gate Holder Plate
2	2	418-55-017	Insert Guide Stabilizing Bracket
3	2	418-55-010	Gate Support Shaft
4	1	418-55-014	Left Hand Side Guide Bracket
5	1	418-55-013	Right Hand Side Guide Bracket
6	4	418-55-016	Gate Support Bar
7	14	2315	SHCS 10-32 x 1/2"
8	6	2310	SHCS 10-32 x 3/8"
9	2	335-11-092	Medium Knob w/Extension
10	2	418-55-015	Oversized Washer
11	1	418-55-012	Back Up Plate



**Pro Series - Feeder/Dispenser  
 Model SI-1750**



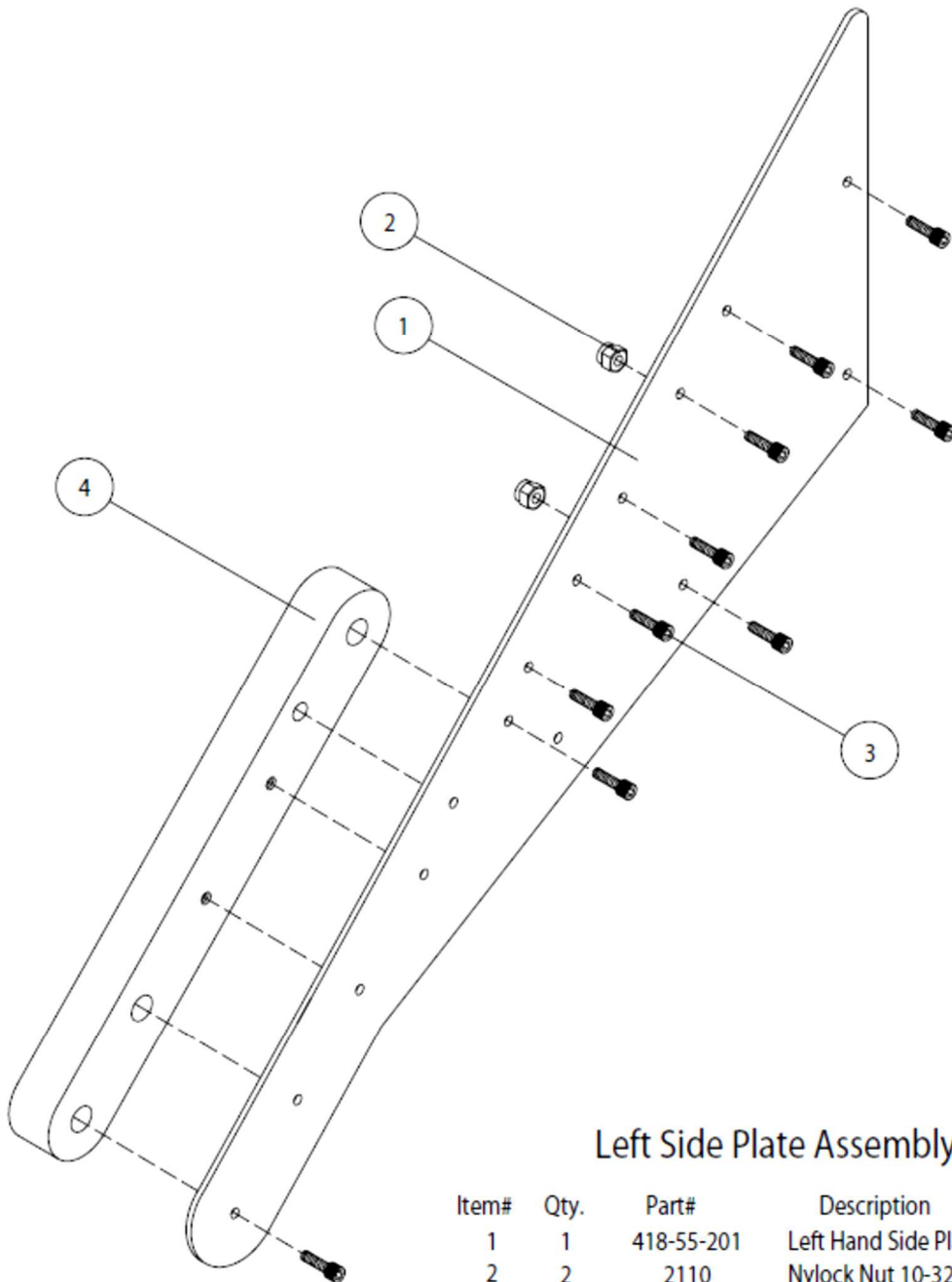
**Right Side Plate Assembly**

Item#	Qty.	Part#	Description
1	10	2310	SHCS 10-32 x 3/8"
2	1	418-55-200	Right Hand Side Plate
3	2	2110	Nylock Nut 10-32
4	1	235-60-202	Carriage Holder





**Pro Series - Feeder/Dispenser**  
**Model SI-1750**

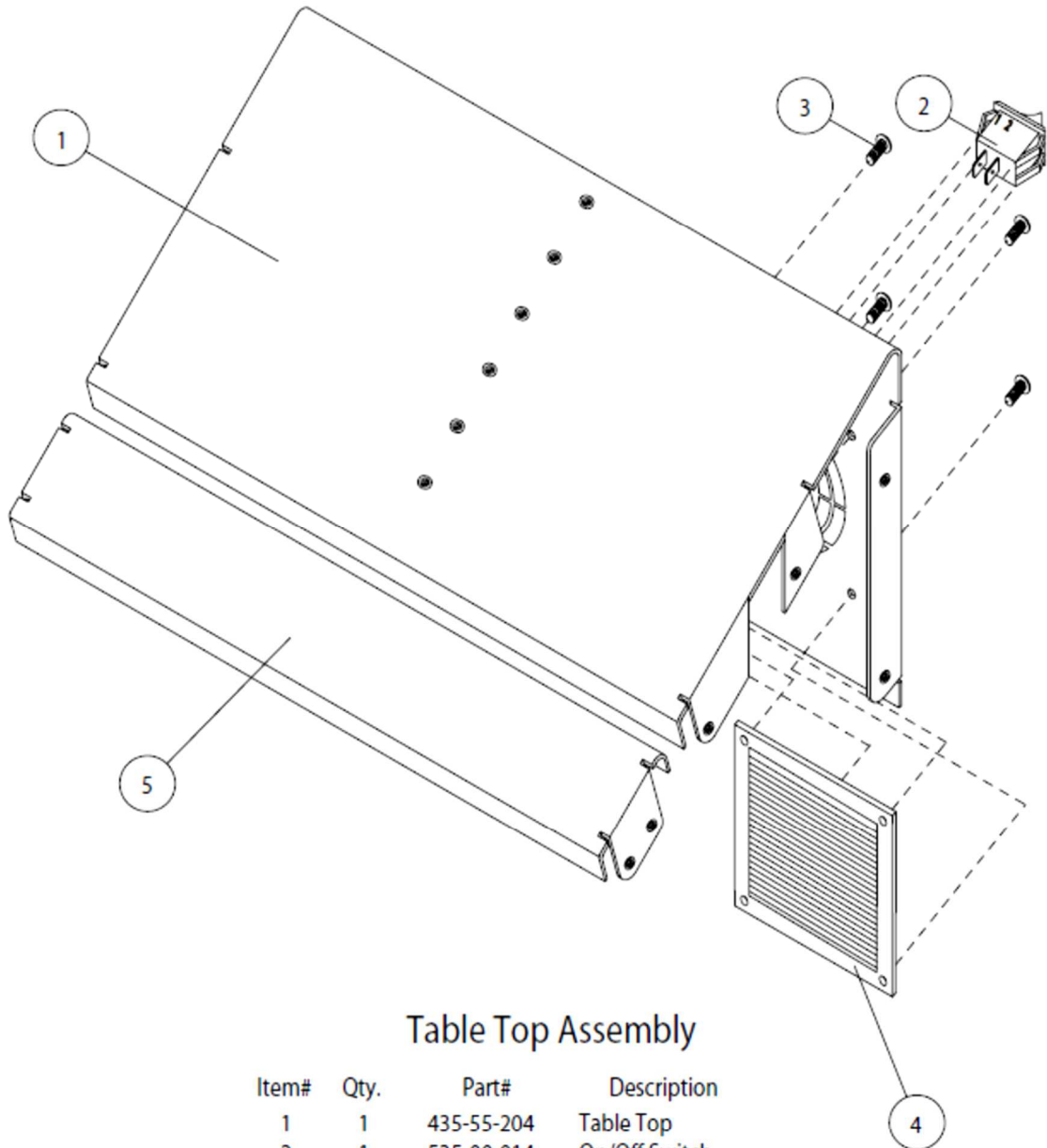


**Left Side Plate Assembly**

Item#	Qty.	Part#	Description
1	1	418-55-201	Left Hand Side Plate
2	2	2110	Nylock Nut 10-32
3	10	2310	SHCS 10-32 x 3/8"
4	1	235-60-203	Carriage Holder



**Pro Series - Feeder/Dispenser  
Model SI-1750**

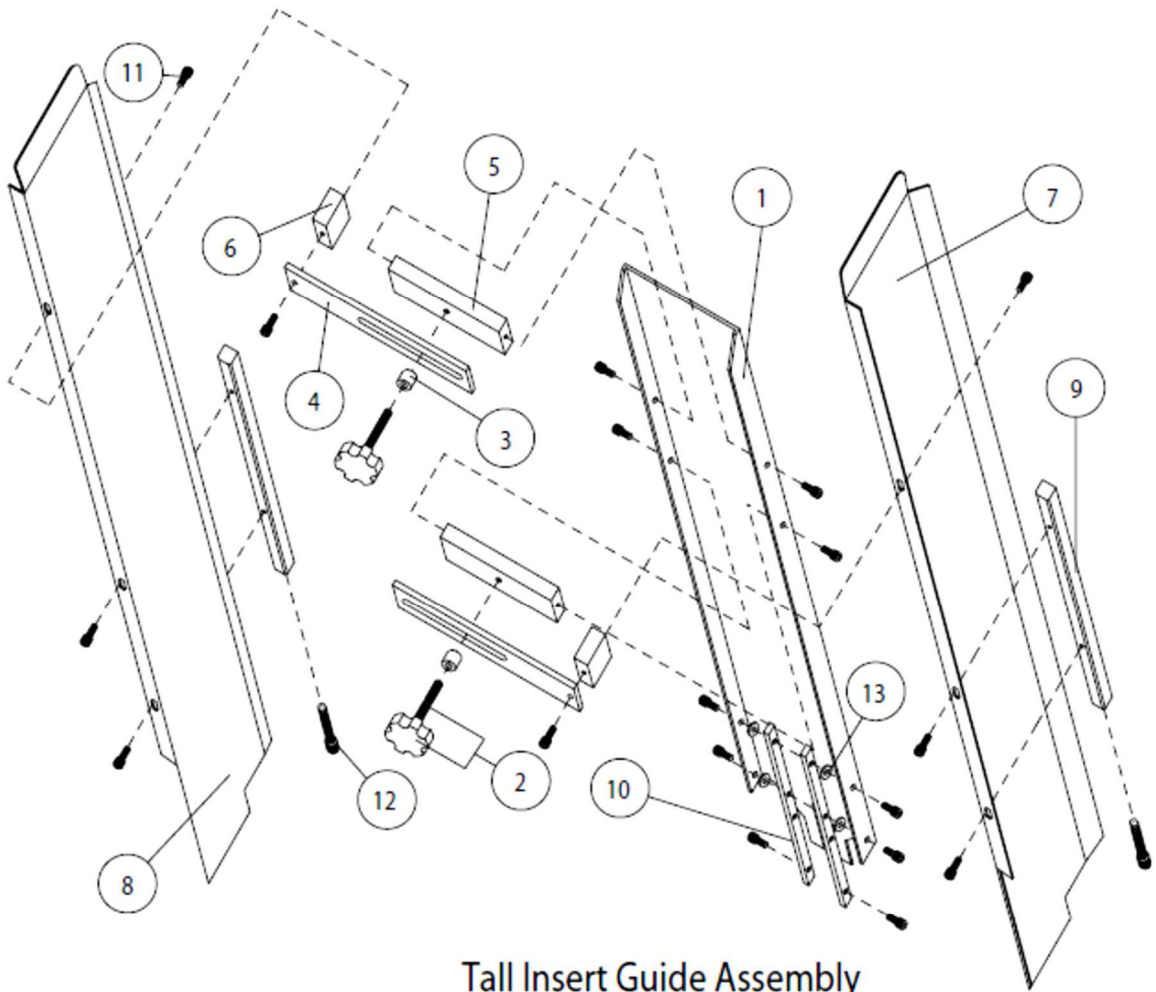


**Table Top Assembly**

Item#	Qty.	Part#	Description
1	1	435-55-204	Table Top
2	1	535-00-014	On/Off Switch
3	4	2305	BHCS 10-32 x 3/8"
4	1	535-00-105	Filter Screen
5	1	435-55-203	Timing Belt Access Cover
NS	1	235-00-064	USA Label
NS	1	235-00-066	Nameplate
NS	4	1101	Blind Rivet
NS	1	535-00-023	Legend "Power"
NS	Items Not Shown On Drawing		



**Pro Series - Feeder/Dispenser  
Model SI-1750**

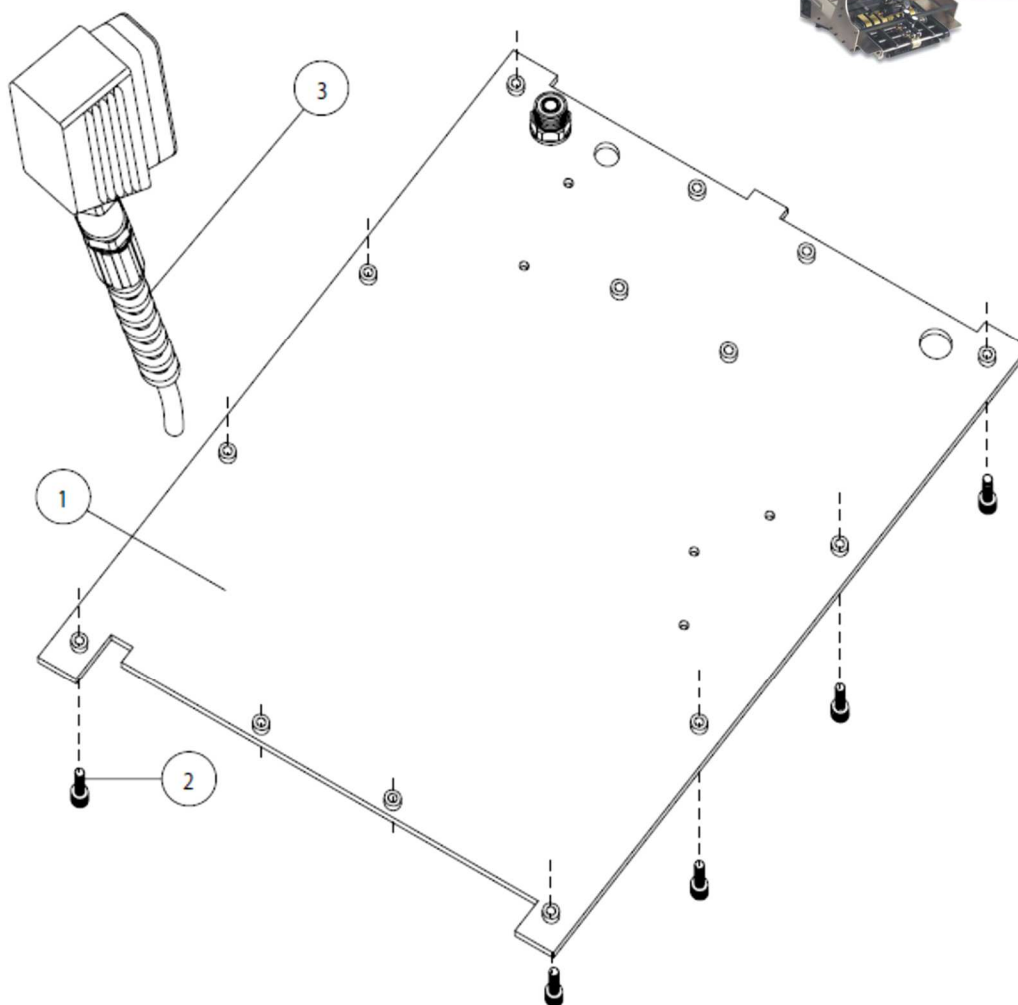


**Tall Insert Guide Assembly**

Item#	Qty.	Part#	Description
1	1	235-00-006	Tall Insert Guide
2	2	235-00-093	Large Thumb Screw
	2	2390	SHCS 1/4-20 x 1"
3	2	335-00-018	Sensor Extension Spacer
4	2	435-00-150	Adjusting Stabilizer Bracket
5	2	435-00-151	Center Stabilizer Mounting Bracket
6	2	435-00-152	Stabilizer Side Guide Spacer
7	1	435-60-208	Left Side Guide Extension
8	1	435-60-209	Right Side Guide Extension
9	2	435-00-157	Right/Left Side Guide Mounting Bracket
10	2	235-00-024	Tall Mounting Strap
11	18	2310	SHCS 10-32 x 3/8"
12	2	2396	SHCS 1/4-20 x 1-1/2"
13	4	2607	Flat Washer #10



**Pro Series - Feeder/Dispenser  
Model SI-1750**



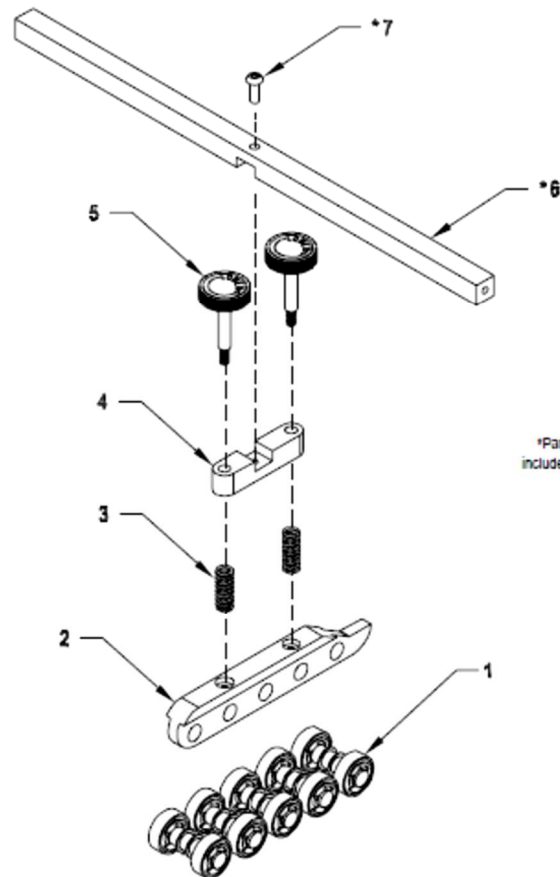
**Base Plate Assembly**

Item#	Qty.	Part#	Description
1	1	435-50-007	Base Plate
2	8	2310	SHCS 10-32 x 3/8"
3	1	535-11-005	2 Meter Power Cord





**Pro Series - Feeder/Dispenser  
Model SI-1750**



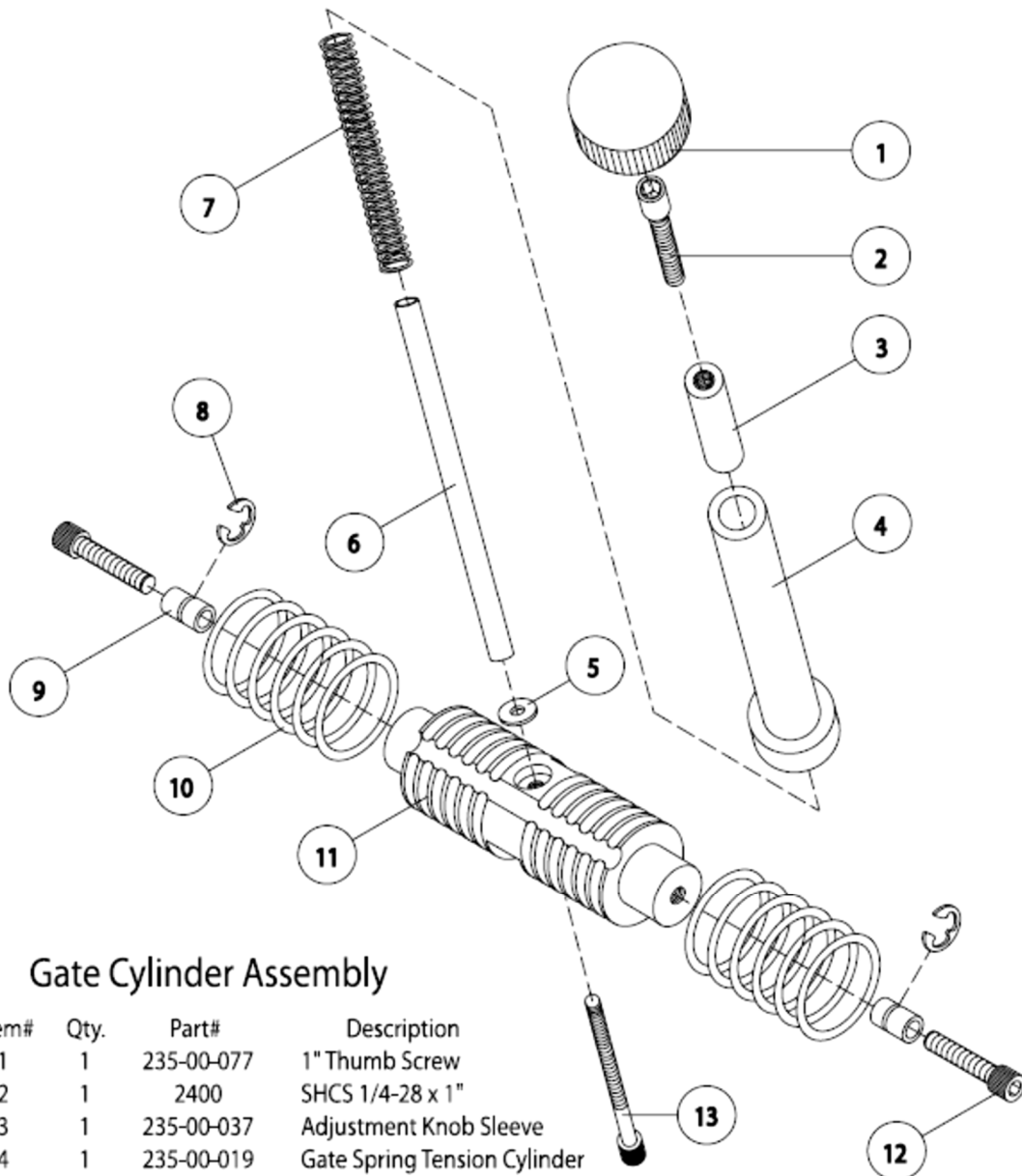
\*Part exists in diagram for reference only and is not included with this assembly. Must be ordered separately.

**5 AXLE HOLD DOWN ASSEMBLY #43511310**

<u>DIAGRAM NUMBER</u>	<u>QTY</u>	<u>DESCRIPTION</u>	<u>PART NUMBER</u>
1	5	Bearing Holder Shaft	43560008
	10	Bearing Ball R6	23500095
	10	Ring Grip 3/8 Waldes	00001110
	20	Clip E 3/8 Waldes	00001150
2	1	Holder Bearing 5 Axle	43560310
3	2	Spring Compression	23560083
4	1	Bar Hold Down Adjustment	23560086
5	2	Screw Cross Bar Hold Down Adjustment	23560087
	2	Hold Down Knob 1	23560077
	2	Grommet Rubber	00001130
	2	Label Gate Adjustment Knob	23500084
6*	1	Cross Support Bar	41855223
7*	1	BHCS 10-32 x 1/2" LG	00002334



**Pro Series - Feeder/Dispenser  
Model SI-1750**

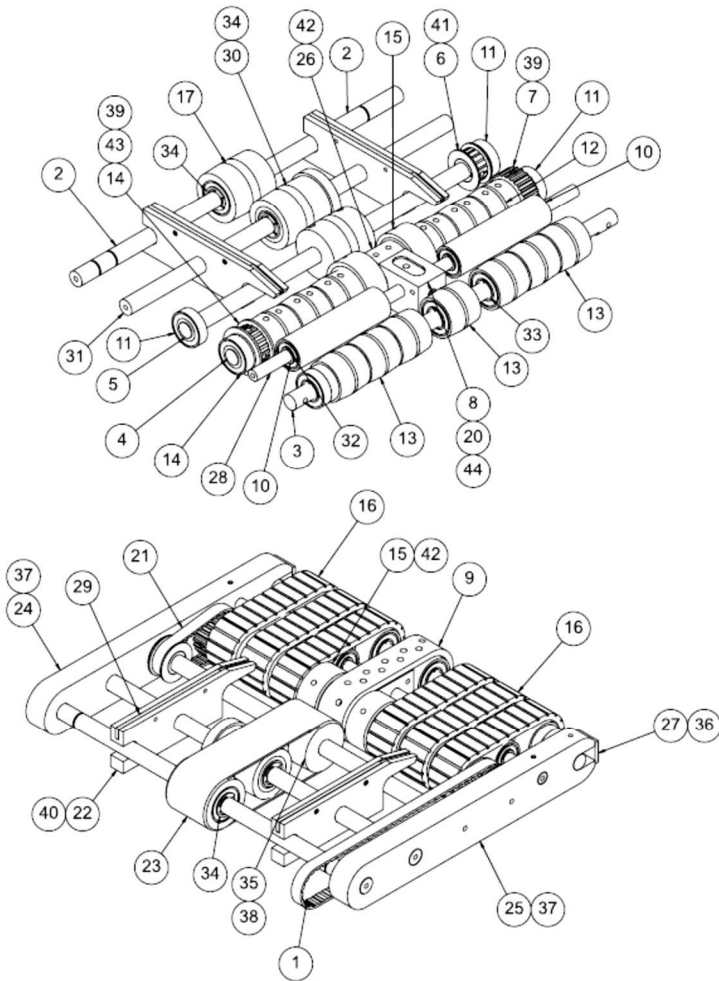


**Gate Cylinder Assembly**

Item#	Qty.	Part#	Description
1	1	235-00-077	1" Thumb Screw
2	1	2400	SHCS 1/4-28 x 1"
3	1	235-00-037	Adjustment Knob Sleeve
4	1	235-00-019	Gate Spring Tension Cylinder
5	1	2607	Flat Washer #10
6	1	235-60-084	EJ Gate Lift Shaft
7	1	235-00-083	Gate Compression Spring
8	2	1150	"E" Clip 3/8"
9	2	235-00-082	Spacer 1/2"
10	12	235-00-104	Gate Cylinder O-Ring
11	1	235-60-300	EJ Gate Cylinder
12	2	2390	SHCS 1/4-20 x 1"
13	1	2336	SHCS 10-32 x 1-1/2"



**Pro Series - Feeder/Dispenser  
Model SI-1750**



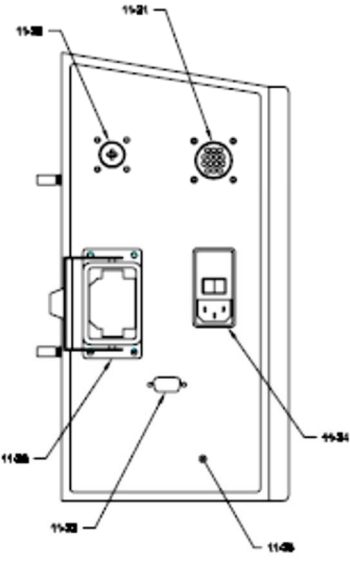
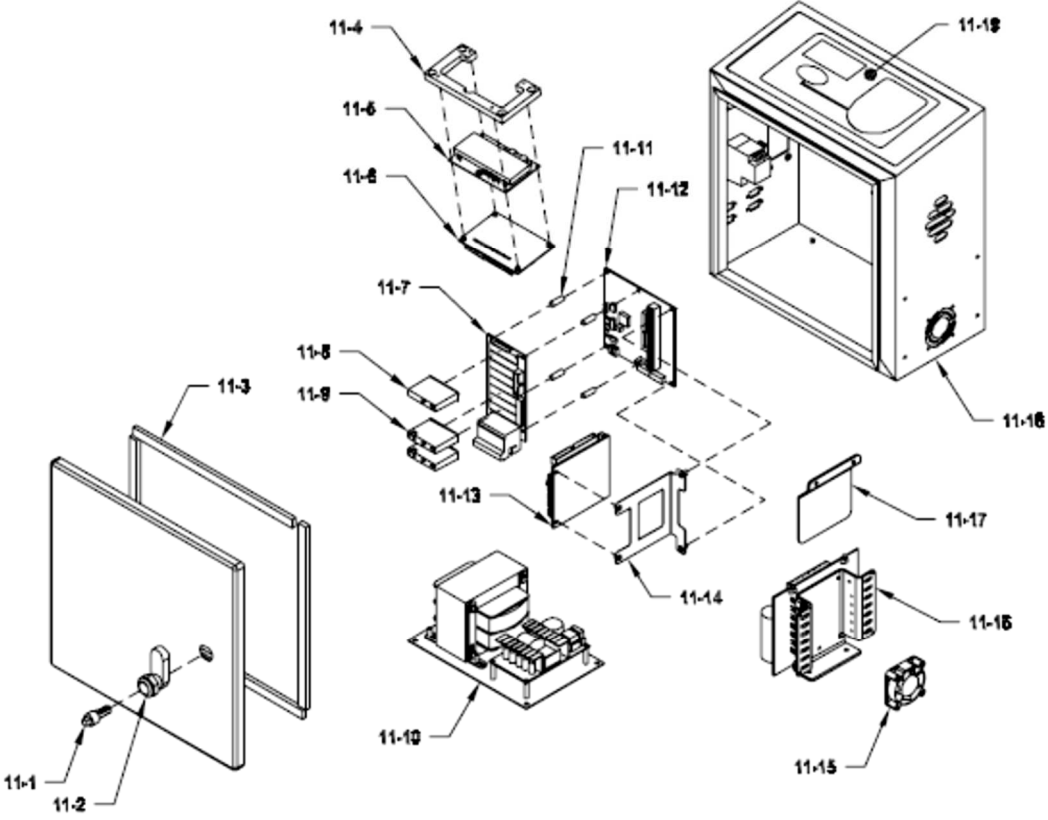
**GROOVED GUM RUBBER BELT CARRIAGE ASSEMBLY #43533485**

ITEM	QTY	NAME
1	1	43500096 DRIVE BELT 170 X L037
2	1	43555047 IDLER SHAFT
3	1	43555147 IDLER SHAFT
4	1	43555205 3-4 IN DRIVE SHAFT
5	1	43555211 DRIVE SHAFT
6	1	43560097 PULLEY 16T
7	1	43560098 PULLEY 24T
8	1	44485001 MANIFOLD
9	1	44485003 VACUUM BELT
10	2	23511270 BELT SUPPORT ROLLER
11	8	23500094 BEARING R8-2RS
12	6	23560208 CROWN DRV ROLLER
13	7	33511028 CROWN DRIVEN ROLLER WITH BEARINGS
14	1	23500097 PULLEY 20T
15	2	23500126 FEED ROLLER
16	6	23500162 BELT TRACTOR
17	1	23511105 CROWN PUL CUP WBEAR
18	1	51476005 BULK HEAD UNION
19	1	51476006 UNEQUAL UNION ELBOW
20	1	51476007 MALE ELBOW
21	1	23560078 TIMING BELT
22	2	23560082 MAT SUPPORT SIDE RAIL
23	1	23560088 CLEAR BELT
24	1	23560202 RS CARR HOLD
25	1	23560203 LS CARR HOLD
26	1	23560206 FLAT DRIVE ROLLER
27	2	44485004 VACUUM BELT TENSION PLATE
28	1	44841056 VAC CARRIAGE SHAFT
29	2	44970006 SLIDE
30	1	51277068 ROLLER DOUBLE DETECT CARRIAGE
31	1	51438009 SHAFT IDLE DISCHARGE 1450
32	4	1110 G RING 3_8
33	11	1115 G RING 1_2
34	4	1155 E CLIP 1_2
35	1	23560106 CROWN PULLEY W_SS
36	2	2320 S 10-32 5_8
37	2	3316 SS 6-32 X 1-4
38	2	2327 SS 1_4-20 1_2
39	3	2217 SS 10-32 5_16
40	4	2203 S 8-32 1_4
41	2	3352 SS 10-32 1_8
42	16	2216 SS 10-32 1_4
43	1	3351 1-8 X 3-8 WOODRUFF KEY
44	1	2228 F 6-32 3_4



**Pro Series - Feeder/Dispenser  
 Model SI-1750**

**EQUIPPED BOX WITH I/O  
 ASSEMBLY #68311050**







**Pro Series - Feeder/Dispenser  
Model SI-1750**

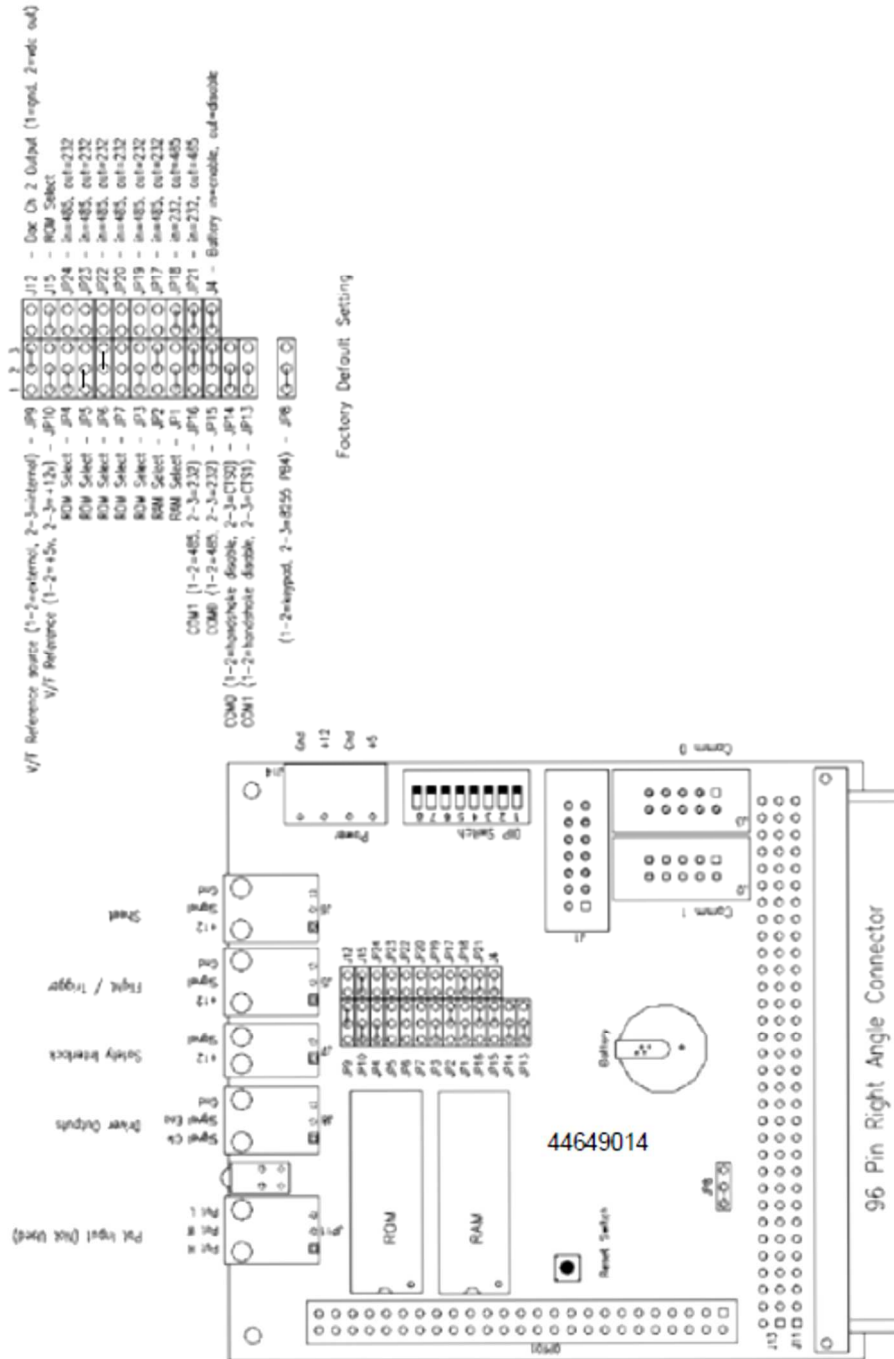
**EQUIPPED BOX WITH I/O  
ASSEMBLY #68311050**

<b>DIAGRAM NUMBER</b>	<b>QTY</b>	<b>DESCRIPTION</b>	<b>PART NUMBER</b>
11-1	1	Insert 7mm Square	44683022
11-2	1	Cam Latch Lock	44683021
11-3	44"	Gasket	44683028
11-4	1	Bracket Display Mounting	44683002
11-5	1	Display VFD w/Connector Header Pin	53511605
11-6	1	Board Keypad Decoder	53500605
11-7*	1	Board Relay I/O	44649128
11-8*	1	Relay Module DC Input 2.5-16VDC Hi Speed	44649115
11-9*	3	Relay Module DC Output 5-60 VDC 3A	44649112
11-10	1	Power Pack Transformer/DC Supply Assy IQ	68311002
11-11*	4	Spacer Standoff .75 X .25 Round Nylon	44675045
11-12*	1	Board Motherboard w/o Options	44649055
11-13	1	Board CPU w/96-Pin Connector	44649014
11-14*	1	Bracket Stabilizing PCB	44649125
11-15	1	Fan Assembly ST Box	68311008
11-16	1	Board Stepper Drive BLD 72-2	53500467
11-17	1	Plate Deflector	44683003
11-18	1	Box IQipped Control (Door Included)	44683001
11-19	1	Keypad ST Series IQipped	44683005
11-20	1	Harness Flight Trigger	64911005
11-21*	1	Harness I/O Internal 14 Pin	64911014
11-22	1	Harness Receptacle Interconnect IQ Box	68311009
11-23	1 2	Cable Communication DB9 Female IQ Box Jackscrew 4-40 Male-Female	44683027
11-24	1	Module AC Power Entry (w/o Fuses)	44649034
11-25*	1	Graphic Overlay With I/O	44683029
NS	16	Cable Tie Wrap	435SO263
NS	2	U-Bolt Square Bend 3-3/8	44360051
NS	1	Cable Ribbon Display	44649022
NS	1	Plate Mounting IQipped Box	44683006
NS	2	Retainer Mounting IQipped Box	44683007
NS	1	Key 7mm Square	44683023
NS	2	Fuse 3A 250V Slo-Blo GMD 5 X 20mm	53500006
NS	2	Terminal Ring	53500046
NS	11	Wire MTW 18 Ga Stranded Green/Yellow St	53500057
NS	1	Eprom	63511001
NS	1	Cable Ground Wire Assembly	63011007
NS	1	Harness Power Supply DC Outputs	64911006
NS	1	Harness Drive Control	64911007
NS	1*	Cable Ribbon Relay I/O	44649007
NS	1*	Cable External Systems 14 Pin	64911012

\*Denotes feature associated with I/O assembly #68311014.



# CPU Detail



Ask GIBAG for more details, if request



Haben Sie Fragen zu weiteren  
**STREAMFEEDER**  
Ersatz- oder Verschleißteile ?

Rufen Sie uns bitte an  
Tel.: 0 45 42 – 8 56 68 - 0





GIBAG Deutschland - Kuvertiermaschinen Bundesstr.9b 23881 Alt-Mölln

**GIBAG** Deutschland  
Kuvertiermaschinen - Papiernachbearbeitungsanlagen  
Bundesstr.9b  
23881 Alt-Mölln

Ihre Telefon-Nr.:	
Ihre Telefax-Nr.:	
Name des Bestellers:	
Position:	
e-mail	
Ihre Auftragsvergabe-Nr.:	
Ihre USt.-ID.Nr.:	

Auftragnehmer

**Telefaxbestellung**  
**04542-85668-20**

**Ersatzteilebestellung**

Auftrags-Nr.:	
Kunden-Nr.:	
Datum:	
Ihr Ansprechpartner:	Herr F.W. Eller
<b>Auftraggeber/Rechnungsanschrift</b>	

Die Lieferung erfolgt aufgrund unserer Ihnen bekannten Allgemeinen Geschäftsbedingungen

Pos	Artikelnummer Bestellnummer	Menge Anzahl	Bezeichnung		Einzelpreis netto	Gesamtpreis netto
1						
2						
3						
4						
5						
6						
7						
8						
9						
10						
				Luftfracht:		
				Zollgebühr:		
Ursprungsland:				Verpackung:		
<b>Versandart:</b>		<b>Lieferanschrift:</b>		Versandkosten:		
Post				Mindermengen-Aufschlag:		
Express				Nettowert		
Spedition				19 % Mehrwertsteuer		
Abholung				Gesamtbetrag		
Kurierdienst						
Gewünschter Liefertermin:				Bei einem Auftragswert unter € 50,00 erheben wir einen Mindermengen-Aufschlag in Höhe von € 8,50		

<b>Zahlungsvereinbarung</b>	Vorkasse	8 Tage nach Lieferung	30 Tage nach Lieferung
	Neukunde	ohne Abzug	4% Aufschlag
	<input checked="" type="checkbox"/>	<input type="checkbox"/>	<input type="checkbox"/>

**Stempel und rechtsverbindliche Unterschrift des Auftraggebers**

Mindestlohn ab dem 01.01.2015  
ab dem 01.01.2015 ist der gesetzliche Mindestlohn für alle Arbeitnehmer/innen in Kraft getreten. Teil dieses Mindestlohngesetzes ist es auch, dass bei der Beauftragung von Dienst- und Werksleistungen, auch bei Subunternehmern und Zulieferern, die Zahlung des Mindestlohnes eingehalten wird. Hiermit bestätigen wir Ihnen, dass wir unseren Mitarbeitern den entsprechenden Mindestlohn zahlen und alle Vorgaben zum Mindestlohn erfüllen.





## Presseinformation vom 14. September 2015

Quellennachweis: **Pack aktuell Team, Schweiz**

Der US amerikanische Verpackungsmaschinen-Hersteller Thiele Technologies Inc. verstärkt sich bei der Zuführ-Technik. Thiele, der zum US-Technologiekonzern Barry-Wehmiller Inc. gehört, übernimmt den Bereich "Direct Mail Solution and Sure-Feed Engineering" von Pitney Bowes, der unter anderem Friktionsanleger herstellt. Der Pitney-Bowes-Bereich wurde vor zehn Jahren gegründet und entwickelt, produziert und vertreibt Zuführsysteme und Friktionsanleger für unterschiedlichste Industrien und Produkte weltweit. Der Bereich gehört seit 2007 zum Geschäftsfeld Direct Mail Solutions von Pitney Bowes, einem US-Konzern, der 4 Milliarden US-Dollar umsetzt und integrierte Dienstleistungen für E-Mail, Messaging und Dokumentenmanagement anbietet.

Thiele Technologies ist ein Geschäftsbereich des Konzerns Barry-Wehmiller Companies Inc. und entstand 1998, als Barry-Wehmiller die Bemis Packaging Machinery Company kaufte und darin anschliessend die Firmen Thiele Engineering Company, Master Palettierer, Frontier Equipment, Edmeyer, Slidell, Streamfeeder, SWF Companies Inc., Nigrelli Systems, Hudson-Sharp Machine Company und Symach integrierte. Thiele hat sich dadurch zu einem globaler Anbieter von Verpackungstechnik entwickelt und ist auch in Europa mit zwei Produktionsstandorten in Benelux vertreten. Schwerpunkte sind Systeme und Lösungen für Sackbefüllung und Palettierung, Kartonverpackung und Palettierung, Kartieren, Bündeln sowie Befüllen und Platzierung vorgefertigter Beutel.

Das Stammhaus, der Technologie-Konzern Barry-Wehmiller, setzt 2 Mrd. US-Dollar um und beschäftigt über 8000 Personen.

Link zur den an der Transaktion beteiligten Unternehmen:

[www.pitneybowes.com](http://www.pitneybowes.com)

[www.barrywehmiller.com](http://www.barrywehmiller.com)

[Link: www.thieletech.com](http://www.thieletech.com)

Weitere Informationen: <http://www.packaktuell.ch/news/unternehmen/2015/9/14/thiele-technologies-ausbau-bei-friktionsanlegern-uebernahme-des-bereiches-sure-feed-engineering-von-pitney-bowes.aspx#sthash.y57CyrAF.dpuf>

### Replace-A-Station *Sure-Feeder* Modell 900/1200EI



#### Specifications

Maximum Product Size **1200EI**: 11.5 W x 12 L in (292 x 305 mm)  
**900EI**: 9.125 W x 12 L in (232 x 305 mm)  
Minimum Product Size 3.0 W x 3.0 L in (76 x 76 mm)  
Min/Max Product Thickness .002 - .375 in (.05 - 10 mm)  
Feeder Hopper Capacity 20" vertical (508 mm)  
Speed Variable 20 to 350 ft./min. (50 to 889 cm/min.)  
Utilities 120/240vac, 50/60Hz, 1A

## **GIBAG** Kuvertiermaschinen

Geräte für Innovative Betriebsabläufe Anlagenbau und Global Finishing

*Other sizes and thickness capabilities available. Contact us for your application.*

