



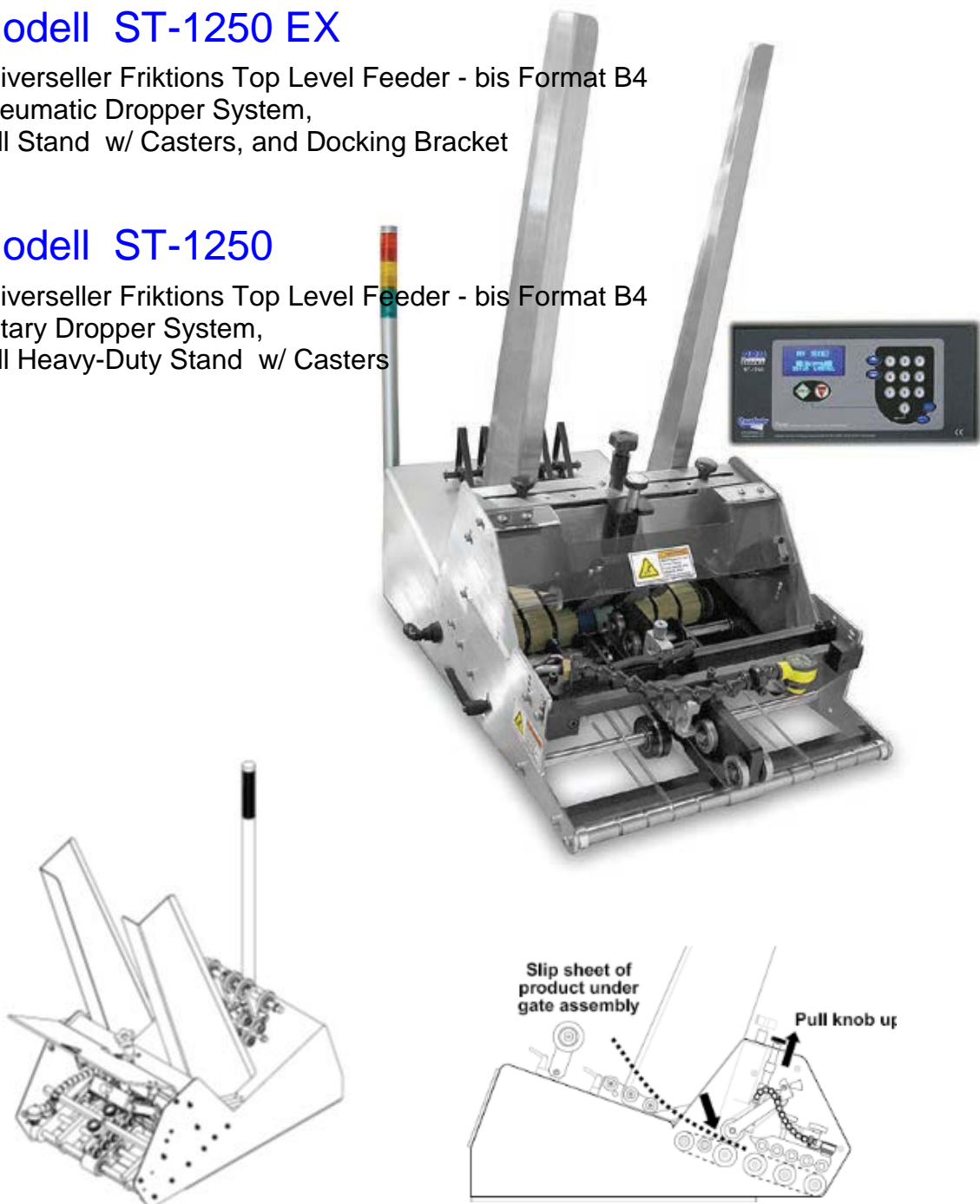
Streamfeeder®

Modell ST-1250 EX

Universeller Friktions Top Level Feeder - bis Format B4
Pneumatic Dropper System,
Tall Stand w/ Casters, and Docking Bracket

Modell ST-1250

Universeller Friktions Top Level Feeder - bis Format B4
Rotary Dropper System,
Tall Heavy-Duty Stand w/ Casters



Siehe auch:
<http://streamfeeder.com/Saleslit/ST1250EX.pdf>



Modell ST-1250 EX

Universeller Friktions Top Level Feeder - bis Format B4
Pneumatic Dropper System,
Tall Stand w/ Casters, and Docking Bracket

Geschwindigkeit: 140,000 mm/Minute

Größe des Beilagenmaterials:

Min.: 95,25 mm x 63,5 mm

Max.: 298,45 mm x 355,6 mm

Option: Min.: 50,80 mm x 63,5 mm

Dicke des Beilagenmaterials:

Min.: 0,76 mm

Max.: 25,4 mm

Füllhöhe : bis 60 cm



Overview

The ST-1250EX is our most popular and versatile friction feeder. The feature-rich iQuipped Intelligent System Controller provides high performance operation with user-friendly menus. The ST-1250EX is ideal for use in many applications and easily integrates mechanically and electrically for increased system efficiency.

Feed a wide variety of flat and multi-thickness products into shrink wrappers, poly baggers, banders, collators, case packers, boxes, and more.

Operates on-demand one at a time or in batch sets up to 9999 pieces.

Standard Features

Vacuum fluorescent display with easy to use menus • Long-lasting natural rubber feed belts • One-knob side guide positioning • Patented advancing O-ring separator for product separation • Tool-less discharge angle adjustment • Miss-detect • Double sheet detect • Timeout stop • Photo-sensor trigger input • Isolated inputs / outputs for system integration • Trigger delay • Self-triggering feature for stand-alone operation • Stainless steel construction • Tower lamp

Applications *(ask us about your application)*

Shrink Wrappers Flow Wrappers Inserter Open Track
Poly-baggers Cartoners Collators
Case Packers Order Fulfillment

Products *(ask us about your products)*

Sheet Paper, Backer Board, Folded Documents, Manuals, Literature Kits, Folders, Cardstock, Envelopes, Booklets, Retail, Signage, Brochures, Collapsed Cartons and more...

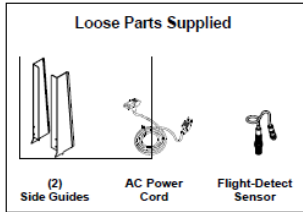


Specifications

Maximum Product Size:	12 in. W x 14 in. L (298.45 mm x 355.6 mm)
Minimum Product Size:	3.75 in. W x 2.5 in. L (95.25 mm x 63.5 mm)
Optional:	2 in. W x 2.5 in. L (50.8 mm x 63.5 mm)
Min/Max Product Thickness:	.003 in. to 1 in. (.076 mm to 25.4 mm)
Belt Speed:	5500 in/min (140,000 mm/min)
Display:	4-line by 20-character vacuum fluorescent
Keypad:	16-key tactile feel membrane
Drive:	Stepper motor
Electrical Requirements:	115/230vac, 50/60Hz, 3A
Sensors:	Diffuse reflective
Communication:	RS-232
Flight Skips:	0 to 99 selectable
Batch Size <i>(batch mode only)</i>:	1 to 9,999 pieces
Time Delays:	Flight or sheet selectable (10 ms to 9.9 sec.)
Feed Triggers:	Photo sensor External input Pieces/minute Time delay selectable
Acceleration:	Selectable
Slow Down <i>(batch mode only)</i>:	Batch number and speed selectable
Weight:	89 lb. (40.36 kg)



Modell ST-1250 EX



Not Shown:

- Control Panel (see Figure 1-2 and Table 1-2)
- Mounting Stand (optional)

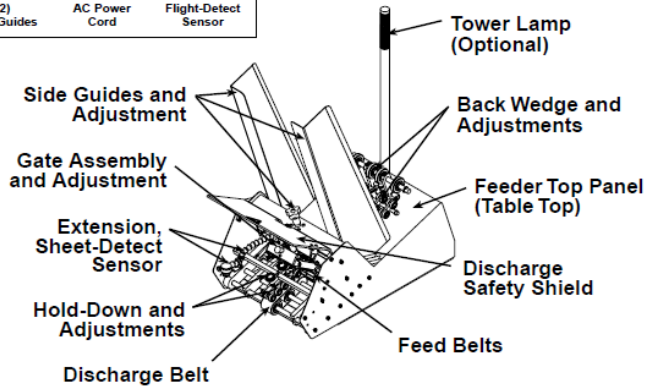


Table 1-1. Main Assemblies Feature Descriptions

Feature	Description
Gate assembly and adjustment	Mounted on a gate plate directly above the feed belts, this device provides a curvature to help preshingle stacked product. Adjustment knob allows you to set downward pressure. When properly adjusted, a one-thickness gap is created to help singulate and eject product.
Top panel (table top)	Used to support the back wedge.
Side guides and adjustments	Holds a stack of product to be fed and helps keep it straight for proper entry through the gate assembly area. Adjustment knob allows you to move the side guides equally offset for different size products.
Back wedge and adjustments	Lifts the product to keep it off the table top, reduces excessive contact with the feed belts, and helps push the product against the curvature of the gate assembly. To achieve proper lift, adjustment wing-nuts allow you to adjust the wedge to various positions and angles.
Hold-down and adjustments	This series of rollers provides a varying pressure on top of product to force it down on the discharge belt, helping to eject a single product after it exits the gate assembly area. During setup, knob allows you to set downward pressure.
Extension, sheet-detect sensor	Mounted on the feeder extension arm, it "looks" for the leading edge of the product to stop the feeder momentarily. For effective operation, a flexible extension allows you to adjust for distance and perpendicular to product.
Flight-detect sensor	Mounted at a remote location, it "looks" for a target on-line (such as a flighted conveyor) to start the feeder.
Feed belts	Provides the friction and motion necessary to pull individual product from the bottom of the stack and through the gate assembly area.
Discharge belts	Combined with the hold-down rollers, provides the friction and motion necessary to pull product away from the gate assembly area. Rotates 50% faster than feed belts to separate and eject the bottom product away from next product entering the gate assembly area.
Control panel	All connectors and switches for sensor, interface, and AC power are located here. Also contains numeric keypad and vacuum fluorescent display for operator control interface. For descriptions, see Figure 1-2 and Table 1-2.
Discharge safety shield	Provides residual risk protection to operator when feeder is running.
Stand (optional)	Supports the feeder and allows for easy mobility. Includes built-in height adjustment.
Tower lamp (optional)	Mounted on the feeder, it contains green, amber, and red colored lights which alert the operator to various status conditions.

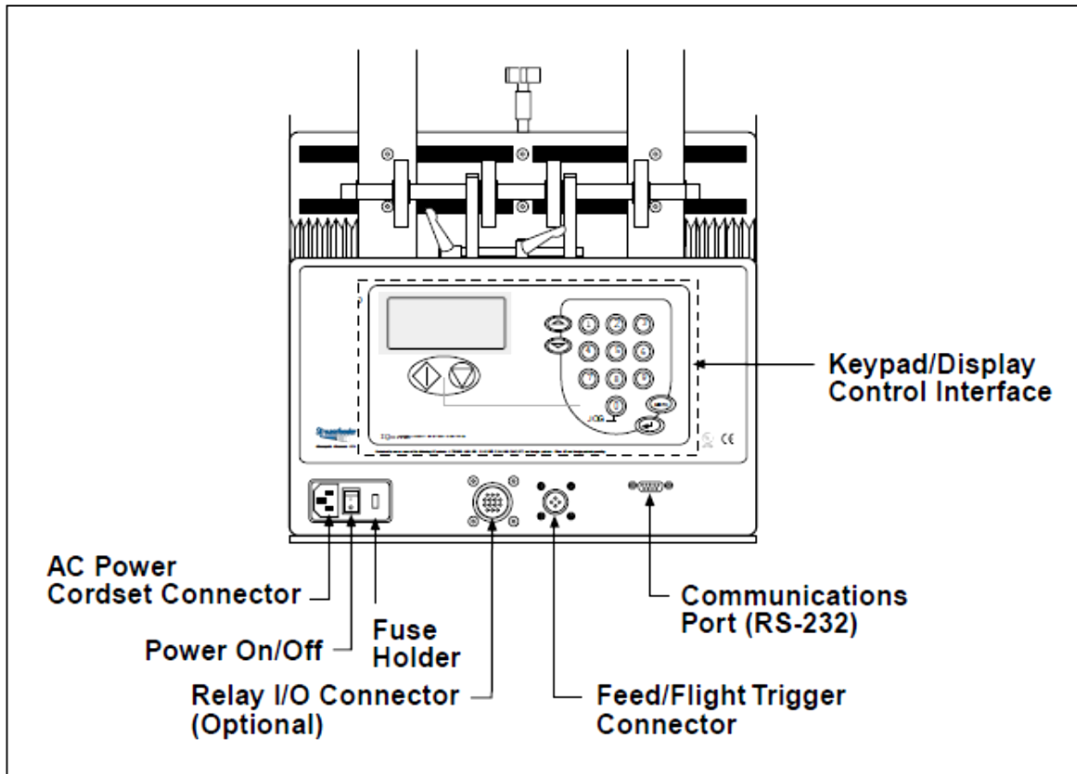


Figure 1-2. Control Panel Components

Table 1-2. Control Panel Feature Descriptions

Feature	Description
AC power cordset connector	Cordset plugs into this IEC320 connector to provide feeder with power from 115-VAC or 230-VAC outlet.
Power On/Off	Toggles AC power On or Off.
Fuse holder	Contains a replaceable GMD3, 3-Amp, 5-mm x 20 mm fuse. <i>IMPORTANT: Always make sure power module is replaced exactly as removed. Failure to follow this caution can result in damaged electrical parts.</i>
Relay I/O connector (optional)	This 14-pin connector is used to output to other devices, either AC or DC voltages, and/or receive input control signals.
Communications port (RS-232)	This 9-pin connector is used to either receive control/data signals from a computer, or send control/data signals to a computer. This port's availability is firmware-dependent.
Feed/flight trigger	The remote flight-detect sensor plugs into this 4-pin connector to provide the "start" signal to begin a feed cycle.



Control Interface

The control interface consists of a keypad and display arrangement which allows you to not only control the operation of the ST Series Universal Friction Feeder, but it also allows you to monitor the status of the job being run.

Refer to Figure 1-3 for names and locations of each part of the control interface. Descriptions are found in Table 1-3.

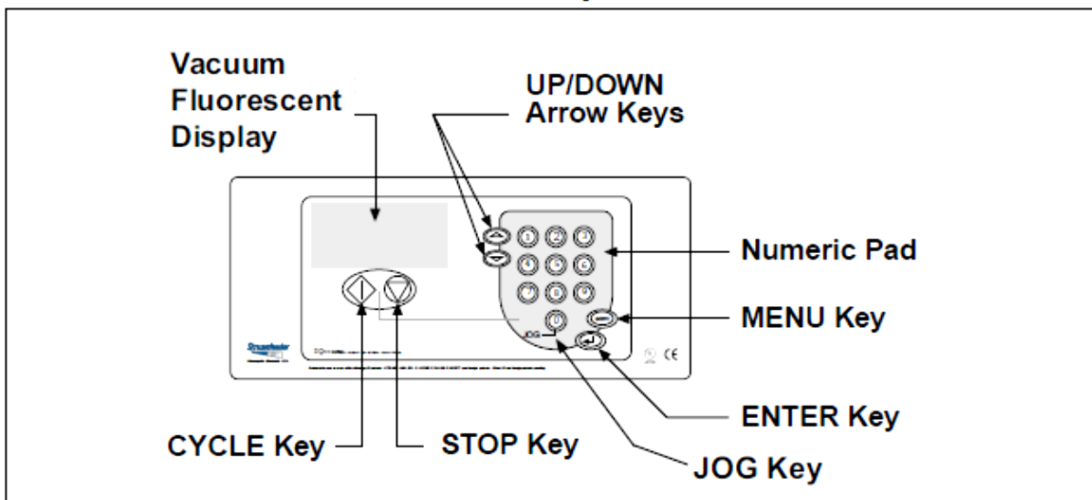


Figure 1-3. Control Interface Features

Table 1-3. Control Interface Feature Descriptions

Feature	Description
Vacuum fluorescent display	This 4-line x 20-character display provides menus for the operator control interface and provides status of feeder during cycling.
Numeric keypad	Used to enter data which controls feeder activity, such as speed (or batch count, for "Batch Control" mode only).
UP/DOWN arrow keys	Scrolls through the system configuration menus. Also, is used to increase and decrease the speed (or batch count, for "Batch Control" mode only).
MENU key	Toggles display between the Run Display screen and the configuration menus.
ENTER key	Allows run values to be stored from the system configuration menus. Also, it resets the piece count (or batch count, for "Batch Control" mode only).
CYCLE key	First, used to advance feeder from the "Suspended" mode to the "Ready" mode. Second, clears feeder faults, such as doubles and missed feeds (if applicable). Finally, completes one feed cycle when in "Ready" mode.
STOP key	Stops the feeder and holds it in "Suspended" mode.
JOG key	Advances the feed belts at a fixed slow speed. This function is useful during feeder setup and may be used to clear jams.



General

The *control interface* provides you with several different options for monitoring status, entering configuration parameters, and cycling the feeder.

Depending upon your particular needs, the control interface can provide you with either *one-shot* control or *batch* control. *Your machine will be set up for one or the other at the time of shipment.*

To fully understand how the control interface works, you must first understand the Run Display. The default menu from which you will start all control functions is called the *Run Display*. This screen is the default screen that is shown when you press any key after powering On the machine.

Run Display Defined

The Run Display for *one-shot* control is a real-time reporting tool containing information on the status of the feeder, such as run speed, number of pieces fed for a particular job, and the number of pieces being fed per minute.

The Run Display for *batch* control is a real-time reporting tool containing information on the status of the feeder, such as run speed, number of batches fed for a particular job, and the batch size.

IMPORTANT

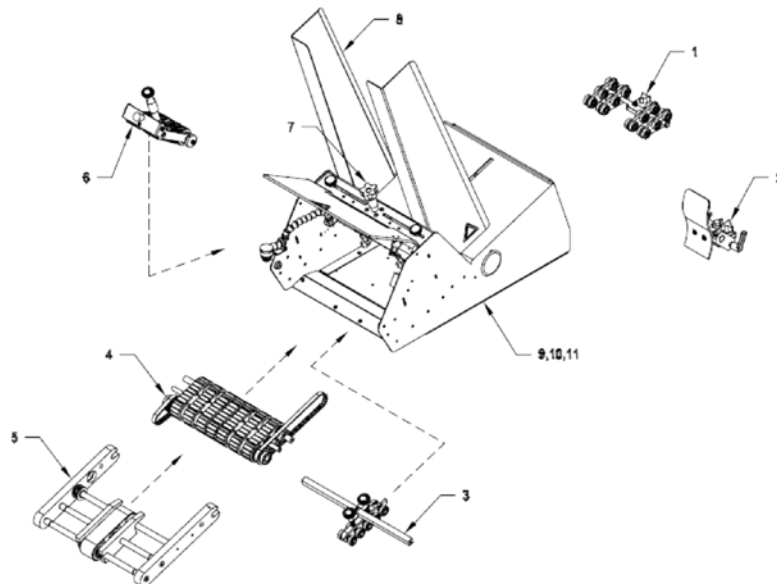
Even though the Run Display is factory-set for immediate operation, it can be customized to suit your changing on-site needs.

There are three types of status messages available for viewing from the Run Display screen: *Ready*, *Suspended*, and *Running*.

Ready	The feeder is ready to feed when a flight signal is received or when the CYCLE key is pressed.
Suspended	The feeder will not feed when it receives a flight signal or when the CYCLE key is pressed. Pressing the CYCLE key will advance the feeder to the "Ready" mode.
Running	The feeder is currently feeding product (cycling).

Modell ST-1250

Mechanical Components





Modell ST-1250

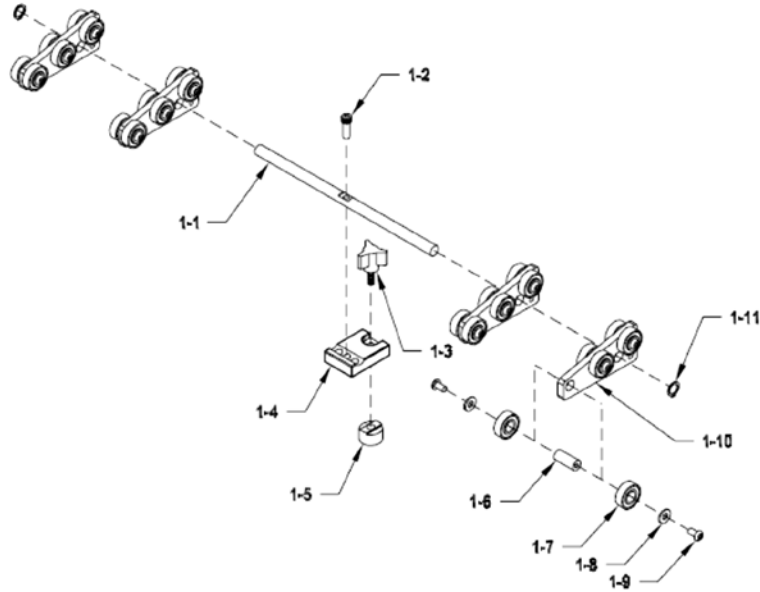


Diagram 1

Low Profile Wedge
Assembly #63311050

**1: LOW PROFILE WEDGE
ASSEMBLY #63311050**

<u>DIAGRAM NUMBER</u>	<u>QTY</u>	<u>DESCRIPTION</u>	<u>PART NUMBER</u>
1-1	1	Wedge Guide Shaft	44633018
1-2	1	SHCS 10-32 X 5/8" LG	00002320
1-3	1	Knob 3 Lobe 10-32 X 5/8	44633033
1-4	1	Wedge Block	44633014
1-5	1	T-Nut Round	44633016
1-6	12	Shaft Belt Tension	33500020
1-7	24	Bearing Ball R6	23500095
1-8	24	Washer Flat #10	00002607
1-9	24	BHCS 10-32 X 3/8" LG	00002305
1-10	4	Narrow Roller Wedge	43560050
1-11	2	Ring Grip 3/8" Waldes	00001110



Modell ST-1250

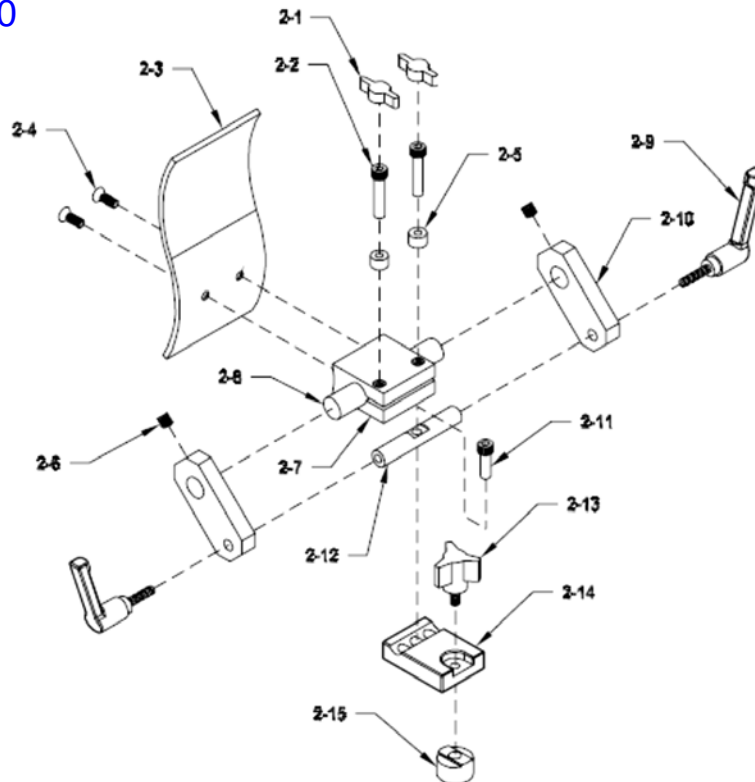
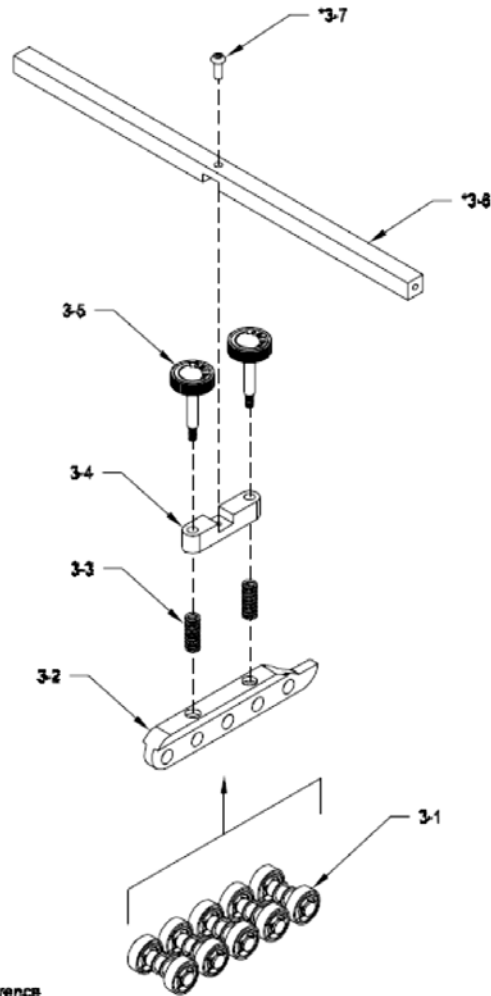


Diagram 2
Single S Wedge
Assembly #63311026

<u>DIAGRAM NUMBER</u>	<u>QTY</u>	<u>DESCRIPTION</u>	<u>PART NUMBER</u>
2-1	2	Knob Wing 10-32	23500076
2-2	2	SHCS 10-32 x 1" LG	00002335
2-3	1	S Wedge	44633025
2-4	2	FHDD 10-32 x 1/2" LG	00002330
2-5	2	Spacer .25 x .375 Tapped 10-32	44633027
2-6	2	SHSS 1/4-20 x 1/4" LG	00002205
2-7	1	Block Mounting	44633026
2-8	1	Shaft Pivot Block	44633028
2-9	2	Adjustment Clamping Handle 1/4-20 x .63	44340015
2-10	2	Bracket Roller Wedge Pivot	44340013
2-11	1	SHCS 10-32 x 5/8" LG	00002320
2-12	1	Shaft Wedge Guide	44633032
2-13	1	Knob 3 Arm 10-32 x 5/8"	44633033
2-14	1	Wedge Block	44633014
2-15	1	T-Nut Round	44633016



Modell ST-1250



*Part exists in diagram for reference only and is not included with this assembly. Must be ordered separately.

Diagram 3

5 Axle Hold Down
Assembly #43511310

<u>DIAGRAM NUMBER</u>	<u>QTY</u>	<u>DESCRIPTION</u>	<u>PART NUMBER</u>
3-1	5	Bearing Holder Shaft	43560008
	10	Bearing Ball R6	23500095
	10	Ring Grip 3/8 Waldes	00001110
	20	Clip E 3/8 Waldes	00001150
3-2	1	Holder Bearing 5 Axle	43560310
3-3	2	Spring Compression	23560083
3-4	1	Bar Hold Down Adjustment	23560086
3-5	2	Screw Cross Bar Hold Down Adjustment	23560087
	2	Hold Down Knob 1	23560077
	2	Grommet Rubber	00001130
	2	Label Gate Adjustment Knob	23500084
3-6*	1	Cross Support Bar	43555215
3-7*	1	BHCS 10-32 x 1/2" LG	00002334

* Part exists in diagram for reference only and is not included with this assembly. Must be ordered separately.



Modell ST-1250

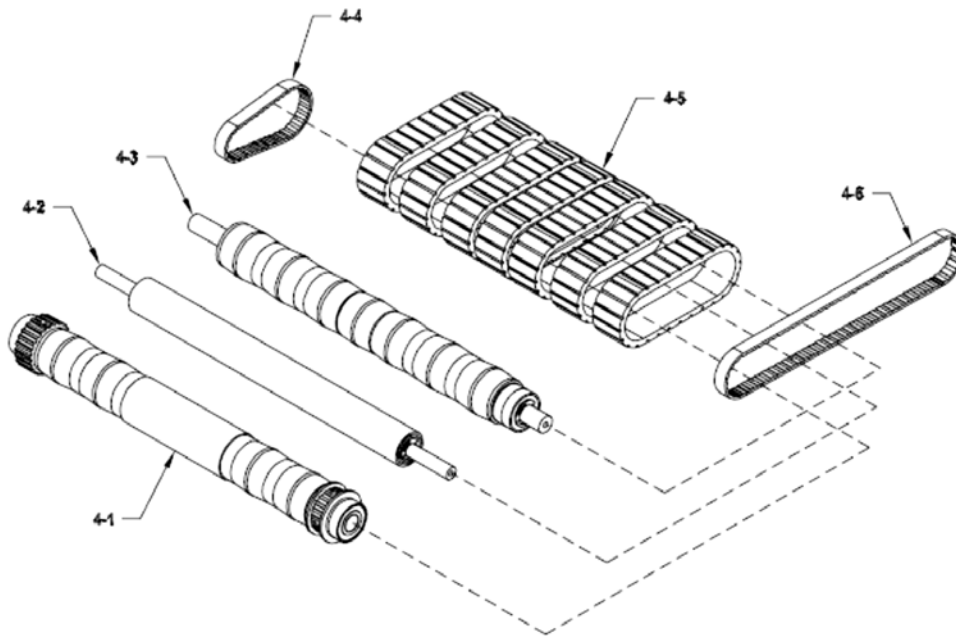


Diagram 4
Grooved Gum Rubber Belt
Feed Section
Assembly #63011031

**4: GROOVED GUM RUBBER BELT FEED SECTION
ASSEMBLY #63011031**

<u>DIAGRAM NUMBER</u>	<u>QTY</u>	<u>DESCRIPTION</u>	<u>PART NUMBER</u>
4-1	1	Shaft Drive	44630019
	1	Pulley 24T 1/2 Bore Flangeless	43560098
	1	Pulley 20T 1/2 Bore w/Flange Driven	23500097
	2	Bearing Ball R8	23500094
	2	Clip E 1/2 Waldes	00001155
	2	Key Woodruff 1/8 X 3/8	00003351
	1	Screw Socket Set 10-32 X 1/4" LG Cup	00002216
	3	Screw Socket Set 10-32 X 5/16" LG Cup	00002217
4-2	1	Shaft Discharge Feed Roller EX	43550036
	1	Belt Support Tube	44630003
	2	Bearing Ball R6	23500095
	2	Clip E 3/8 Waldes	00001150
4-3	1	Idler Shaft	43555047
	1	Tube Driven	44630004
	4	Bearing Ball R8	23500094
	3	Clip E 1/2 Waldes	00001155
	4-4	1	Belt Drive Timing 78XL037
4-5	7	Belt Feed Tan Gum Grooved Composite 1W	23500162
4-6	1	Belt Drive 170XL037	43500096



Modell ST-1250

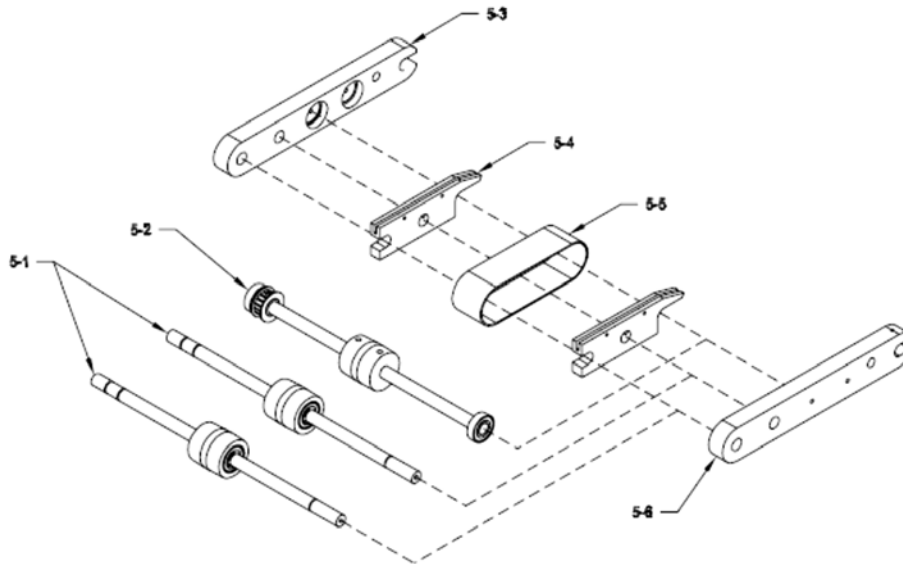


Diagram 5
Clear Urethane Discharge Section
Assembly #63011033

**5: CLEAR URETHANE DISCHARGE SECTION
ASSEMBLY #63011033**

DIAGRAM NUMBER	QTY	DESCRIPTION	PART NUMBER
5-1	2	Idler Shaft	43555047
	2	Roller Crown Driven with Bearings	23511106
	4	Clip E 1/2" Waldes	00001155
5-2	1	Shaft Drive SS 1/2	43555211
	1	Drive Crown Pulley	23560106
	1	Pulley 16T 1/2" Bore with Flange	43560097
	2	SHSS 10-32 X 1/8" LG	00003352
	2	SHSS 1/4-20 X 1/2" LG	00002327
	2	Bearing Ball R8	23500094
	1	Woodruff Key 1/8 X 3/8	00003351
5-3	1	Holder Right Hand Carriage	23560202
5-4	2	Rail Material Support Slide	23560082
5-5	1	Belt Discharge Clear 1.5 Wide	23560088
5-6	1	Holder Left Hand Carriage	23560203



Modell ST-1250

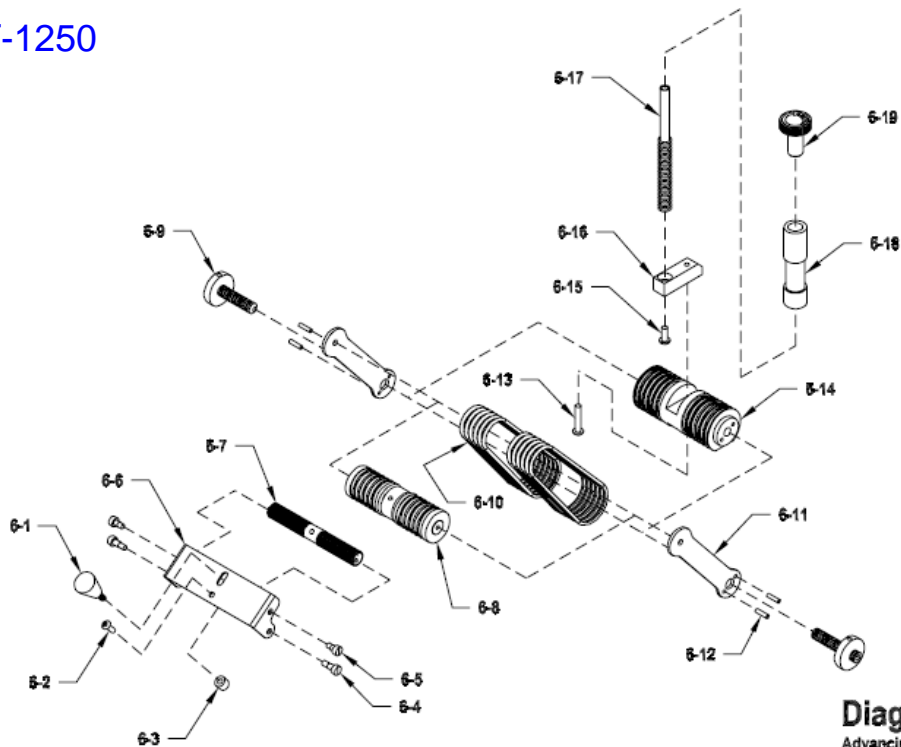


Diagram 6
Advancing O Ring Gate
w/Horizon Adjust
Assembly #87211001

**6: ADVANCING O RING GATE WITH HORIZON ADJUST
ASSEMBLY #87211001**

<u>DIAGRAM NUMBER</u>	<u>QTY</u>	<u>DESCRIPTION</u>	<u>PART NUMBER</u>
6-1	1	Handle Studded 10-32 X 1/2"	44657007
6-2	1	BHCS 8-32 X 1/2" LG	00002302
6-3	1	Spacer Belt Indexer .312 X .375	44657010
6-4	2	Screw Shoulder 8-32 Slotted	00003320
6-5	2	Screw Shoulder 8-32 X 1/8	00003321
6-6	1	Belt Indexer Bracket	44657005
6-7	1	Pinch Roll Cam	44657003
6-8	1	Belt Indexer Shaft	44657008
	2	O Ring Take Up Roller	44657002
	1	Belt Indexer Center Hub	44657009
	2	Clip E 1/2 Walde	00001155
	2	SHSS 8-32 X 5/16 Cup Point	00002211
6-9	2	Roller	44872003
	2	Adjustment Screw	44872005
	2	SHSS 10-32 X 3/8" LG Nylon Tip	44872007
6-10	12	O Ring Advancing ST	44657006
6-11	2	Side Plate Adjust	44872002
6-12	4	Pin Roll 1/8 X 1/2	00001161
6-13	1	BHCS 10-32 X 1" LG	00002340
6-14	1	Gate Cylinder w/Horizon	44872004
6-15	1	BHCS 10-32 X 1/2" LG	00002334
6-16	1	Mount Gate Lift Shaft	15000001
6-17	1	Shaft Gate Lift	23560084
	1	Spring Gate Compression	23500083
6-18	1	Cylinder Gate Spring Tension	23500019
6-19	1	Sleeve Adjusting Knob	23500037
	1	O Ring	23500240
6-20	1	SHCS 1/4-28 x 1" LG	00002400
	1	Knob 1 Black	23500077
	1	Label Gate Adjustment Knob	23500084



Modell ST-1250

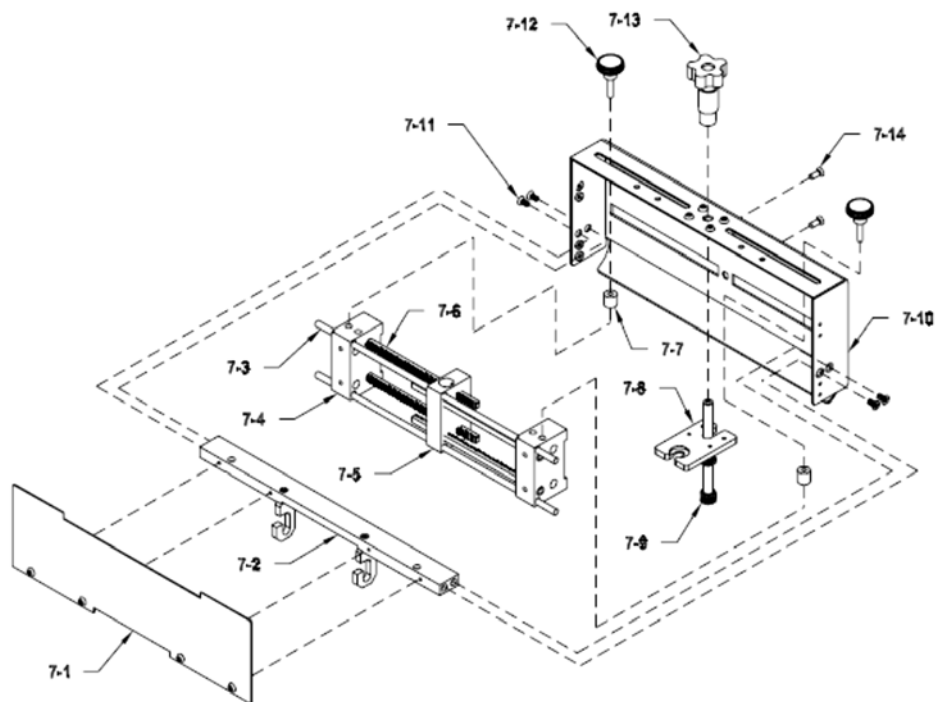


Diagram 7
Solid Gate Plate
Assembly #64011004

**7: SOLID GATE PLATE
ASSEMBLY #64011004**

<u>DIAGRAM NUMBER</u>	<u>QTY</u>	<u>DESCRIPTION</u>	<u>PART NUMBER</u>
7-1	1	Guide Adjustment Cover Side	44646012
	4	BHCS 10-32 X 3/8" LG	00002805
7-2	1	Gate Support Bar Lower	44646003
	2	Hook Gate J	15000007
	2	SHCS 8-32 X 5/8" LG	00002215
7-3	2	Rail Side Guide Support	44646006
7-4	2	Guide Adjustment Block	44646001
	4	SHSS 1/4-20 X 1/4" LG	00002205
7-5	1	Guide Stationary Block Side	44646002
7-6	4	Rack	44646010
7-7	2	Spacer Lower	44646015
7-8	1	Block Adjustment Reference	44646004
	4	BHCS 10-32 X 3/8" LG	00002805
7-9	1	Shaft Pinion Adjustment	44646005
7-10	1	Solid Gate Plate	44640004
7-11	4	FHSS 10-32 X 3/8" LG	00002234
7-12	2	Knob Plastic 10-32	44681021
	2	SHSS 10-32 X 1 1/2" LG	00003313
	2	Spacer Upper	44646016
7-13	1	Knob 5 Lobe	44646009
	1	Spring Retainer Upper	44646008
	1	Spring Retainer Lower	44646007
	1	Spring Compression	44646013
7-14	2	FHSS 10-32 X 1/2" LG	00002830



Modell ST-1250

**8: SIDE GUIDE KIT 2624
ASSEMBLY #64011002**

DIAGRAM NUMBER	QTY	DESCRIPTION	PART NUMBER
8-1	1	Side Guide Left 2624	44640002
	1	Warning Label Side Guide	44600005
8-2	1	Side Guide Right 2624	44640003
	1	Warning Label Side Guide	44600005
8-3	2	Guard Rear Accordion	44600001
8-4	4	FHSS 10-32 X 1/2" LG	00002830

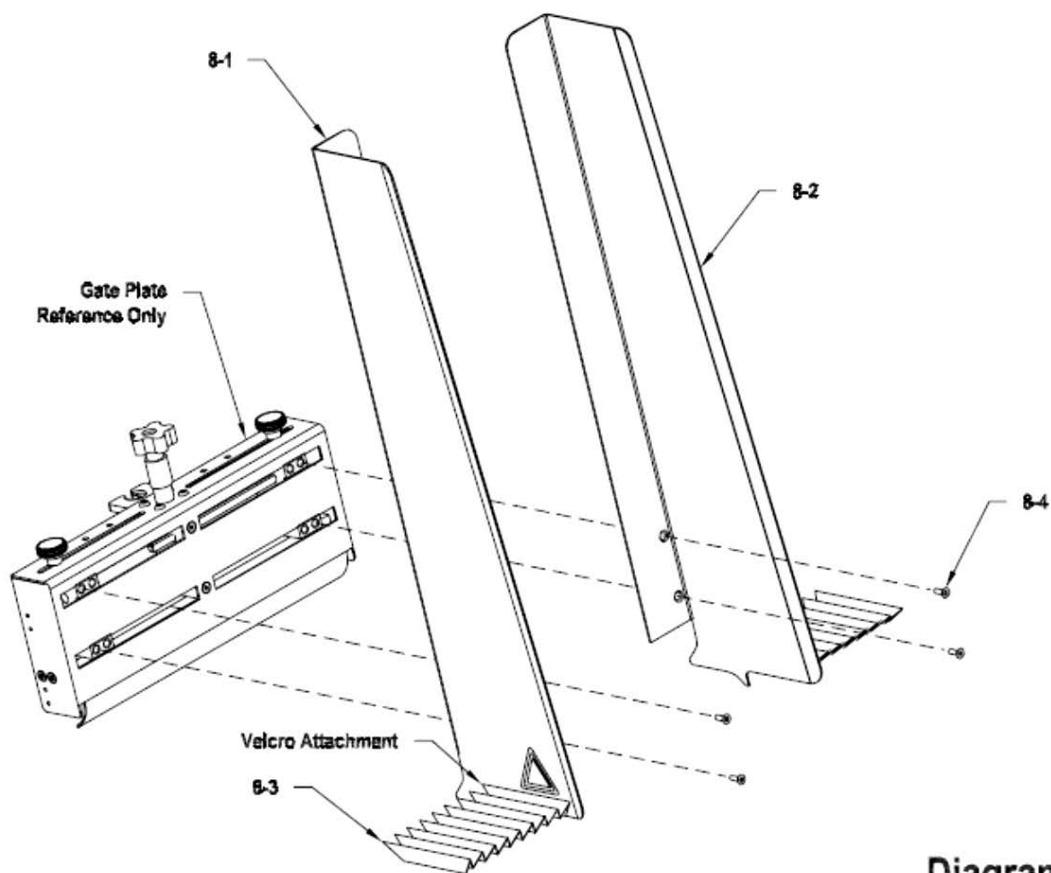
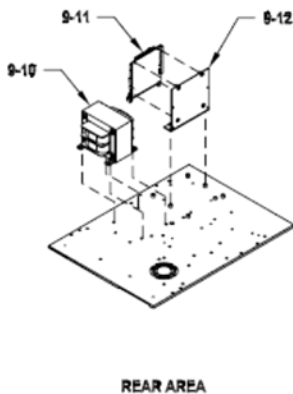
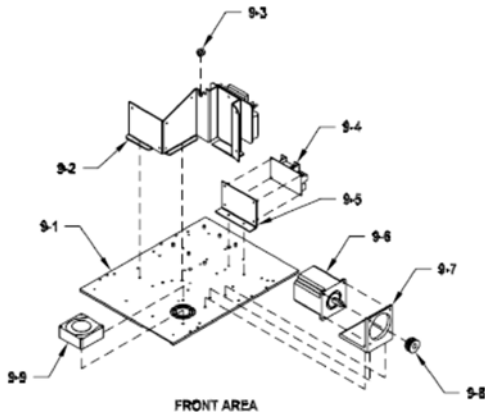


Diagram 8
Side Guide Kit 2624
Assembly #64011002!



Modell ST-1250

**9: ELECTRICAL COMPONENTS
ASSEMBLY #63011002**



<u>DIAGRAM NUMBER</u>	<u>QTY</u>	<u>DESCRIPTION</u>	<u>PART NUMBER</u>
9-1	1	Base Plate	44630002
9-2	1	Board Stepper Drive BLD72-5	44649030
9-3	1	Grommet 3/4 X 3/8 X1/2	44649054
9-4	1	Board Power DC 5V & 12V 2.5 X 4.25	44649033
9-5	1	Bracket Power Supply Mounting	44649036
9-6	1	Motor Drive Stepper Assy	53511390
9-7	1	Motor Mount	44630011
9-8	1	Pulley 18T 1/2 Bore W/Flange & Hub	44350053
9-9	1	Fan Assembly ST/Reliant Cooling	64911035
9-10	1	Transformer Power 300VA	44683025
9-11	1	Board CPU w/96 Pin Connector	44649014
	1	Connector T & B 96 Pin	44649031
9-12	1	Bracket Mounting CPU Board	44649038
NS	16	Cable Tie Wrap	435SO261
NS	2	Terminal Female	44649046
NS	1	Cable Communication Female DB9	44649047
NS	34	Sheathing #O HP Black	44649085
NS	4	Terminal Disconnect Female 22-18 ga	53500045
NS	4	Joint Wire Crimp Style	53500152
NS	2	Terminal Disc Female .020 22-18 AWG	53500254
NS	1	Cable DC Power Supply Assy AC Input	63011006
NS	1	Cable Ground Wire Assembly	63011007
NS	1	Harness Safety Interlock	64911001
NS	1	Harness Sheet Sensor	64911002
NS	1	Harness Flight Trigger	64911005
NS	1	Harness Power Supply DC Output	64911006
NS	1	Harness Drive Control	64911007

Diagram 9
Electrical Components
Assembly #63011002



Modell ST-1250

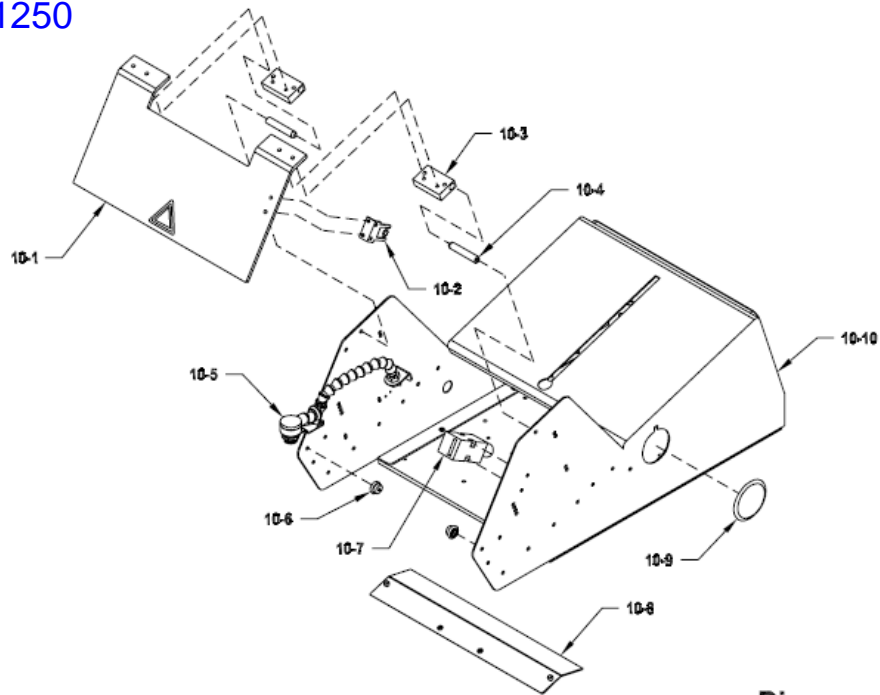


Diagram 10
Base Features 1

10: BASE FEATURES 1

<u>DIAGRAM NUMBER</u>	<u>QTY</u>	<u>DESCRIPTION</u>	<u>PART NUMBER</u>
10-1	1	Cover Top Protective	44640006
	1	Label Warning	44600004
10-2	1	Key Safety Interlock	44649010
10-3	2	Hinge Top Cover Mount	44640012
10-4	2	Shaft Top Cover Hinge Mount	44640011
10-5	1	Sensor ST Sheet Assembly	64911011
	2	Support O Ring Cover	43555068
	2	Bracket Rubber Spacer	44640009
10-7	1	Switch Safety Interlock Assembly	64911009
10-8	1	Cover Bottom Protective	44640008
10-9	1	Plug 2 Hole Cover	44500061
10-10	1	Shell ST1250	44630001
NS	1	Sensor ST Flight Assembly 50mm	63011038
NS	2	Holder Adhesive Wire	23500079
NS	1	Belt Tensioner Assembly	23511290
NS	2	Cable Tie Wrap	435SO263
NS	1	Power Cord (115V Model)	53511020
NS	1	Power Cord & Allen Wrench Set (230V Model)	53522210
NS	1	ST Batch Count Mode	63511001
NS	1	ST One Shot Mode	63511002 11 :



Modell ST-1250

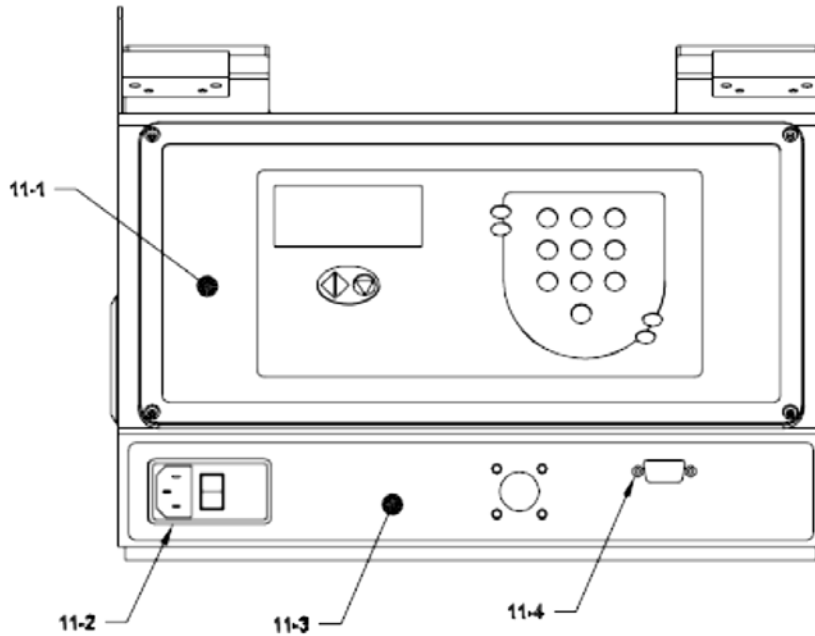


Diagram 11
Base Features 2

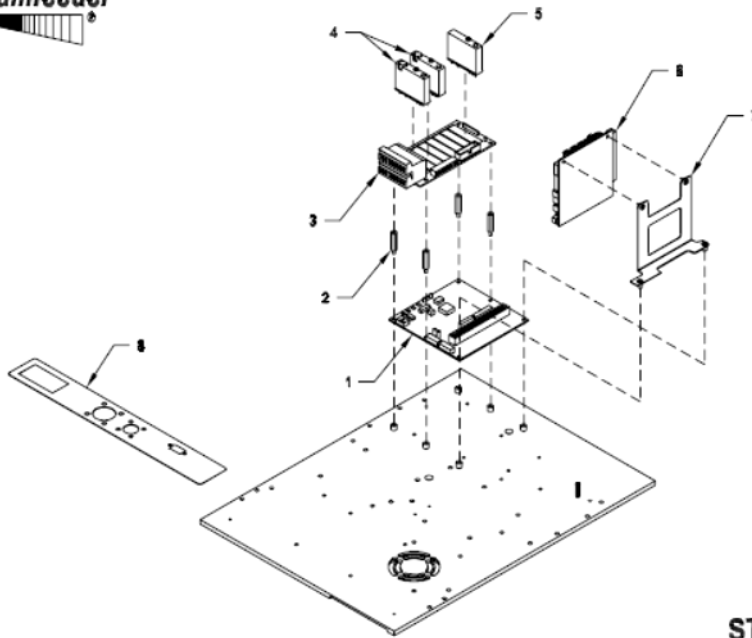
11: BASE FEATURES 2

<u>DIAGRAM NUMBER</u>	<u>QTY</u>	<u>DESCRIPTION</u>	<u>PART NUMBER</u>
11-1	1	Keypad/Display w/Cable ST1250	63011008
11-2	1	Module AC Power Entry (w/o Fuse)	44649034
	1	Fuse 3A 250V Slo-Blo GMD 5 x 10 mm	53500006
11-3	1	Graphic ST1250 Standard Lower	44649003
11-4	2	Jackscrew 4-40 Male-Female	53500512



10 Optional Components

Streamfeeder



ST1250
Systems Interface I/O
Assembly #68311020

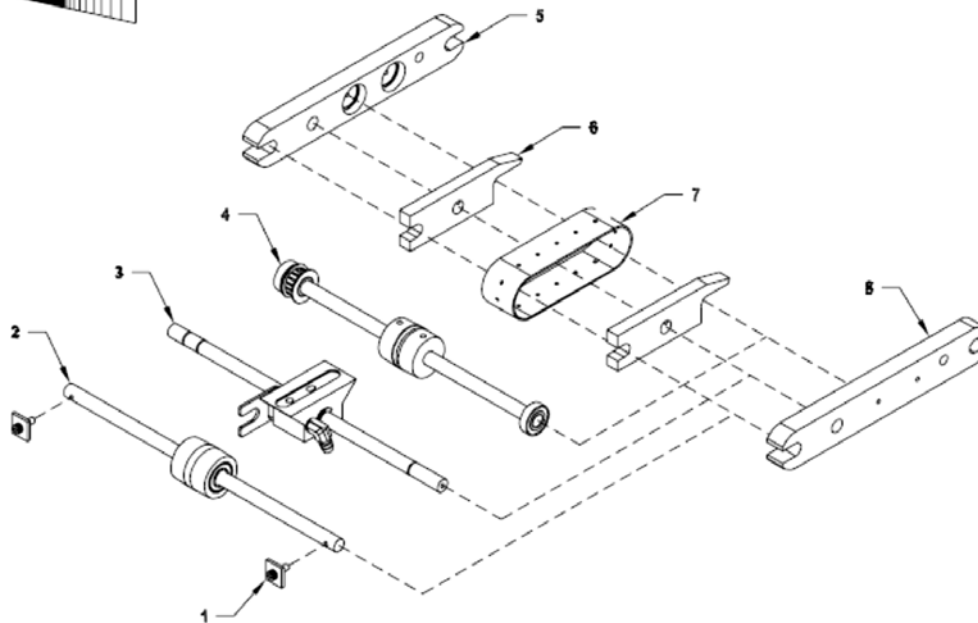
SYSTEMS INTERFACE I/O ASSEMBLY #68311020

<u>DIAGRAM NUMBER</u>	<u>QTY</u>	<u>DESCRIPTION</u>	<u>PART NUMBER</u>
1	1	Board Motherboard w/o Options	44649055
2	4	Standoff Male/Female 6-32 X 1	44649048
3	1	Board Relay I/O	44545026
4	2	Relay Module DC Output VDC 3A	44649112
5	1	Relay Module DC Input 2.5-16VDC Hi Speed	44649115
6*	1	Board CPU w/96-Pin Connector	44649014
7	1	Bracket Stabilizing PCB to Mother	44649125
8	1	Graphic ST1250 I/O	44649002
NS	1	Cable Ribbon Relay I/O	44649007
NS	1	Cable External Systems Interface 14 Pin	64911012
NS	1	Harness I/O Internal 14 Pin	64911014

Parts removed from standard ST1250 configuration in order to accommodate I/O option:

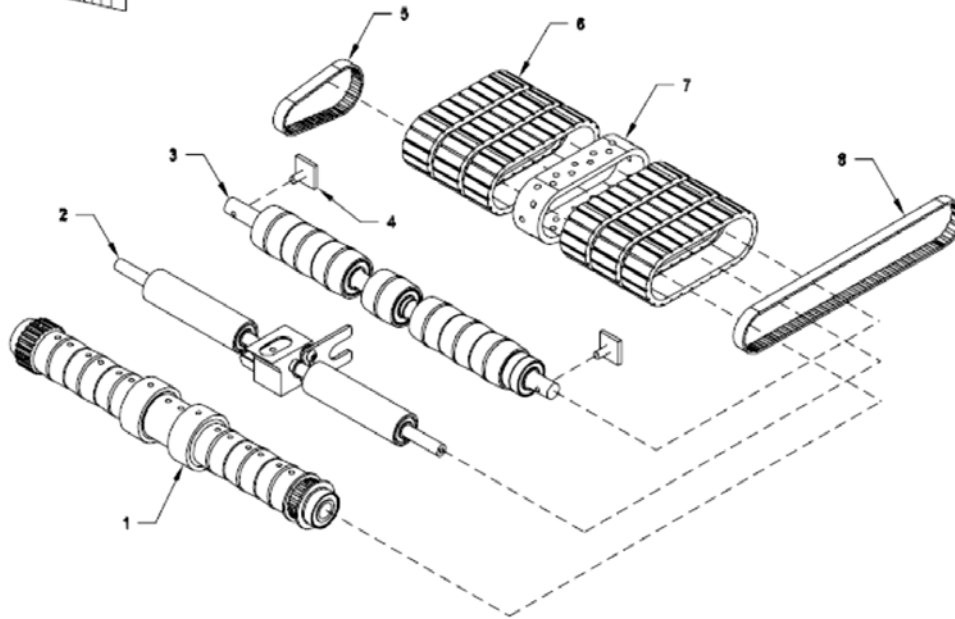
1	Graphic ST1250 Standard Lower	44649003
1	Connector T & B 96 Pin	44649031
1	Bracket Mounting CPU Board	44649038

*Part exists in diagram for reference only and is not included with this assembly.



**VACUUM BELT DISCHARGE SECTION
ASSEMBLY #63011034**

<u>DIAGRAM NUMBER</u>	<u>QTY</u>	<u>DESCRIPTION</u>	<u>PART NUMBER</u>
1	2	Plate Vacuum Belt Tension	44485004
	2	SHCS 10-32 X 5/8" LG	00002320
2	1	Shaft Idler	43555147
	1	Roller Crown Drive with Bearing	23511105
	2	Ring Grip 1/2 Waldes	00001115
3	1	Idler Shaft	43555047
	1	Manifold Vacuum Discharge	43555242
	1	Nipple 90 Degrees Brass Hose	44450029
	1	Material Alignment Bracket Spacer	44485014
	1	Bracket Material Alignment	44485002
	2	BHCS 10-32 X 3/8" LG	00002305
	2	Ring Grip 1/2 Waldes	00001115
	1	Clip E 1/2 Waldes	00001155
4	1	Shaft Drive SS 1/2	43555211
	1	Pulley O Ring Crown VF	44450008
	2	O Ring Gate Cylinder	23500089
	2	SHSS 1/4-20 X 1/2" LG (For Crown Pulley)	00002327
	1	Pulley 16T 1/2 Bore with Flange	43560097
	2	SHSS 10-32 X 1/8" LG (For 16T Pulley)	00003352
	1	Key Woodruff 1/8 X 3/8	00003351
	2	Bearing Ball R8	23500094
5	1	Holder Right Side Carriage	27500008
6	2	Rail Material Support Slide	23560082
7	1	Discharge Belt Vacuum 1.5 Wide	43555241
8	1	Holder Left Side Carriage	27500009
NS	6 ft	Vinyl Flex Hose 3/8 ID 19/32 OD 250 PSI	44450026
NS	1	Connector Vacuum 3/8 Plastic Bulkhead	53500218
NS	1	Connector Vacuum 3/8 Plastic Insert 90 Deg.	53500219
NS	1	Connector 3/8 X 3/8 Tube Elbow	53500220



**VACUUM BELT FEED SECTION
ASSEMBLY #63011032**

ST1250
Vacuum Belt Feed Section
Assembly #63011032

DIAGRAM NUMBER	QTY	DESCRIPTION	PART NUMBER	
1	1	Shaft Drive 3/4	43555205	
	1	Roller Flat Drive	23560206	
	2	Roller Feed .75 Inch Bore	23500126	
	6	Crown Drive Roller	23560208	
	1	Pulley 24T 1/2 Inch Bore Flangeless	43560098	
	1	Pulley 20T 1/2 Inch Bore w/Flange Driven	23500097	
	2	Bearing Ball R8	23500094	
	2	Key Woodruff 1/8 X 3/8	00003351	
	15	SHSS 10-32 X 1/4" LG Cup Point (2 for Each Crown Drive Roller) (2 for Flat Drive Roller) (1 for Flanged Pulley)	00002216	
	5	SHSS 10-32 X 5/16" LG Cup Point (2 for Flangeless Pulley) (1 for Flanged Pulley) (1 for Each Blue Feed Roller)	00002217	
	2	1	Shaft Discharge Feed Roller EX	43550036
		1	Manifold	44485001
		4	Washer Flat #10	00002607
		1	Bracket Material Alignment	44485002
		2	BHCS 10-32 X 3/8" LG	00002305
6		Ring Grip 3/8 Waldes	00001110	
2		Belt Support Roller Assembly	23511270	
1		Nipple 90 Degree Brass Hose	44450029	
3	1	Shaft Idler	43555147	
	7	Roller Crown Driven with Bearings	33511028	
	12	Ring Grip 1/2 Waldes	00001115	
	2	Bearing Ball R8	23500094	
4	2	Plate Vacuum Belt Tension	44485004	
	2	SHCS 10-32 X 5/8" LG	00002320	
5	1	Belt Drive Timing 78XL037	23560078	
6	6	Belt Feed Tan Gum Grooved Composite 1W	23500162	
7	1	Feed Belt Blue Vacuum 1W	44485003	
8	1	Belt Drive 170XL037	43500096	
NS	6 ft	Vinyl Flex Hose 3/8 ID 19/32 OD 250 PSI	44450026	
NS	1	Connector Vacuum 3/8 Plastic Bulkhead	53500218	
NS	1	Connector Vacuum 3/8 Plastic Insert 90 Deg.	53500219	
NS	1	Connector 3/8 X 3/8 Tube Elbow	53500220	



Haben Sie Fragen zu weiteren
STREAMFEEDER
Ersatz- oder Verschleißteile ?

Rufen Sie uns bitte an
Tel.: 0 45 42 – 8 56 68 - 0





GIBAG Deutschland - Kuvertiermaschinen Bundesstr.9b 23881 Alt-Mölln

Telefaxbestellung
04542-85668-20

GIBAG Deutschland
Kuvertiermaschinen - Papiernachbearbeitungsanlagen
Bundesstr.9b
23881 Alt-Mölln

Auftragnehmer

Ersatzteilebestellung

Ihre Telefon-Nr.:	
Ihre Telefax-Nr.:	
Name des Bestellers:	
Position:	
e-mail	
Ihre Auftragsvergabe-Nr.:	
Ihre USt.-ID.Nr.:	

Auftrags-Nr.:	
Kunden-Nr.:	
Datum:	
Ihr Ansprechpartner:	Herr F.W. Eller
Auftraggeber/Rechnungsanschrift	

Die Lieferung erfolgt aufgrund unserer Ihnen bekannten Allgemeinen Geschäftsbedingungen

Pos	Artikelnummer Bestellnummer	Menge Anzahl	Bezeichnung		Einzelpreis netto	Gesamtpreis netto
1						
2						
3						
4						
5						
6						
7						
8						
9						
10						
				Luftfracht:		
				Zollgebühr:		
Ursprungsland:				Verpackung:		
Versandart:		Lieferanschrift:		Versandkosten:		
Post				Mindermengen-Aufschlag:		
Express				Nettowert		
Spedition				19 % Mehrwertsteuer		
Abholung				Gesamtbetrag		
Kurierdienst						
Gewünschter Liefertermin:				Bei einem Auftragswert unter € 50,00 erheben wir einen Mindermengen-Aufschlag in Höhe von € 10,00		

Zahlungsvereinbarung	Vorkasse	8 Tage nach Lieferung	30 Tage nach Lieferung
	Neukunde	ohne Abzug	4% Aufschlag
	<input checked="" type="checkbox"/>	<input type="checkbox"/>	<input type="checkbox"/>

Stempel und rechtsverbindliche Unterschrift des Auftraggebers

Mindestlohn ab dem 01.01.2015
ab dem 01.01.2015 ist der gesetzliche Mindestlohn für alle Arbeitnehmer/innen in Kraft getreten.
Teil dieses Mindestlohngesetzes ist es auch, dass bei der Beauftragung von Dienst- und Werksleistungen, auch bei Subunternehmern und Zulieferern, die Zahlung des Mindestlohnes eingehalten wird. Hiermit bestätigen wir Ihnen, dass wir unseren Mitarbeitern den entsprechenden Mindestlohn zahlen und alle Vorgaben zum Mindestlohn erfüllen.



Presseinformation vom 14. September 2015

Quellennachweis: [Pack aktuell Team, Schweiz](#)

Der US-amerikanische Verpackungsmaschinen-Hersteller Thiele Technologies Inc. verstärkt sich bei der Zuführ-Technik. Thiele, der zum US-Technologiekonzern Barry-Wehmiller Inc. gehört, übernimmt den Bereich "Direct Mail Solution and Sure-Feed Engineering" von Pitney Bowes, der unter anderem Friktionsanleger herstellt. Der Pitney-Bowes-Bereich wurde vor zehn Jahren gegründet und entwickelt, produziert und vertreibt Zuführsysteme und Friktionsanleger für unterschiedlichste Industrien und Produkte weltweit. Der Bereich gehört seit 2007 zum Geschäftsfeld Direct Mail Solutions von Pitney Bowes, einem US-Konzern, der 4 Milliarden USDollar umsetzt und integrierte Dienstleistungen für E-Mail, Messaging und Dokumentenmanagement anbietet.

Thiele Technologies ist ein Geschäftsbereich des Konzerns Barry-Wehmiller Companies Inc. und entstand 1998, als Barry-Wehmiller die Bemis Packaging Machinery Company kaufte und darin anschliessend die Firmen Thiele Engineering Company, Master Palettierer, Frontier Equipment, Edmeyer, Sidell, Streamfeeder, SWF Companies Inc., Nigrelli Systems, Hudson-Sharp Machine Company und Symach integrierte. Thiele hat sich dadurch zu einem globalen Anbieter von Verpackungstechnik entwickelt und ist auch in Europa mit zwei Produktionsstandorten in Benelux vertreten. Schwerpunkte sind Systeme und Lösungen für Sackbefüllung und Palettierung, Kartonverpackung und Palettierung, Kartonieren, Bündeln sowie Befüllen und Platzierung vorgefertigter Beutel.

Das Stammhaus, der Technologie-Konzern Barry-Wehmiller, setzt 2 Mrd. USDollar um und beschäftigt über 8000 Personen.

Link zur den an der Transaktion beteiligten Unternehmen:

www.pitneybowes.com

www.barrywehmiller.com

Link: www.thieletech.com

Weitere Informationen: <http://www.packaktuell.ch/news/unternehmen/2015/9/14/thiele-technologies-ausbau-bei-friktionsanlegern-uebernahme-des-bereiches-sure-feed-engineering-von-pitney-bowes.aspx#sthash.y57CyrAF.dpuf>

Replace-A-Station *Sure-Feeder* Modell 900/1200EI



Specifications

Maximum Product Size **1200EI**: 11.5 W x 12 L in (292 x 305 mm)

900EI: 9.125 W x 12 L in (232 x 305 mm)

Minimum Product Size 3.0 W x 3.0 L in (76 x 76 mm)

Min/Max Product Thickness .002 - .375 in (.05 - 10 mm)

Feeder Hopper Capacity 20" vertical (508 mm)

Speed Variable 20 to 350 ft./min. (50 to 889 cm/min.)

Utilities 120/240vac, 50/60Hz, 1A

Other sizes and thickness capabilities available. Contact us for your application.